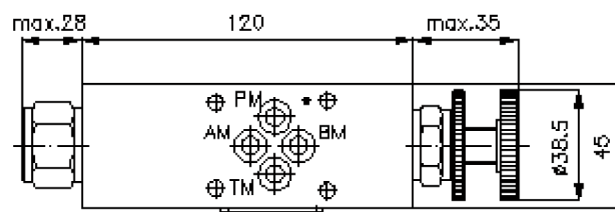
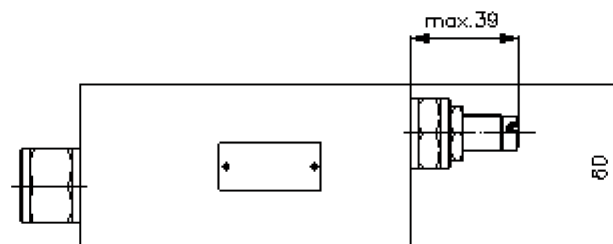
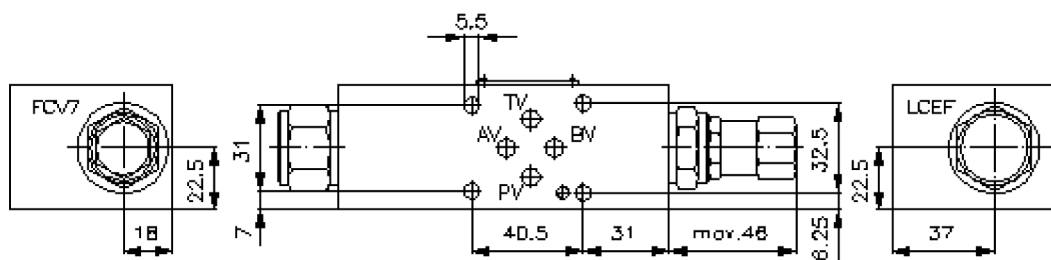
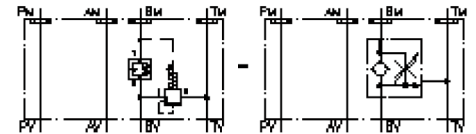


3-way flow control valve CETOP 3 ((sandwich plate) in B to T)

SR3Z-06.-B07./..

IZ-670-200-00

(subject to change)



3-way flow control valve CETOP 3 ((sandwich plate) in B to T)

SR3Z-06.-B07./..



Motrac Hydraulik GmbH
Siemensring 87 - D-47877 Willich
fon +49-(0)2154-8162.0 - fax +49-(0)2154-8162.499
e-mail info.miw@motracindustries.com
internet www.motracindustries.com

IZ-670-200-00

(subject to change)



Ordering example:

SR3Z - 06A - B 07 C / 20
| | | | | |
A **B** **C** **D** **E** **F**

Model code:

- | | |
|--|--|
| A design
flow regulator valve
with mounting interface DIN 24340 form A
sandwichplate design | E adjustment
S = screw adjustment
C = cap
K = handknob |
| B size and material
06A = aluminum (F37)
06S = steel (9SMnPb28K resp. GGG-40) | F controlled flow option
FF = throttle-check-valve
10 = flow range
20 = flow range
40 = flow range |
| C function mode
B = in B acting (supply flow) | |
| D throttle valve
07 = FCV7-10.-.. | |

Technical Data:

nominal pressure:	250 bar (A) 350 bar (S)
nominal flow:	45 l/min
weight:	1.1 / 2.1 kg (A/S)
logic element valve:	LCEF-10.-A-F-0-100 see datasheet no. CD-210-101-00
throttle check valve:	FCV7-10.-.. see datasheet no. MF-440-100-00
seals:	included: 4 pcs. O-ring 9.25 x 1.78