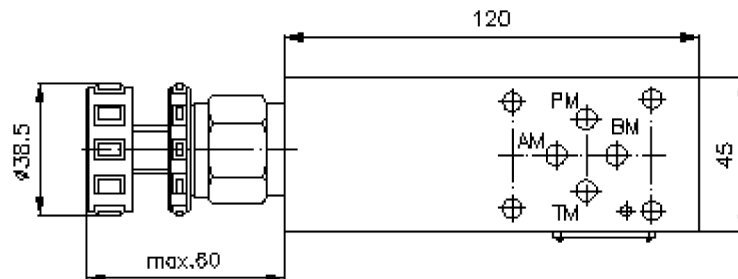
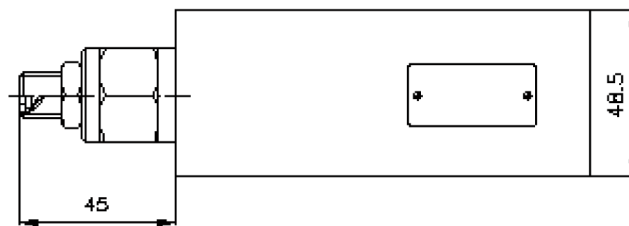
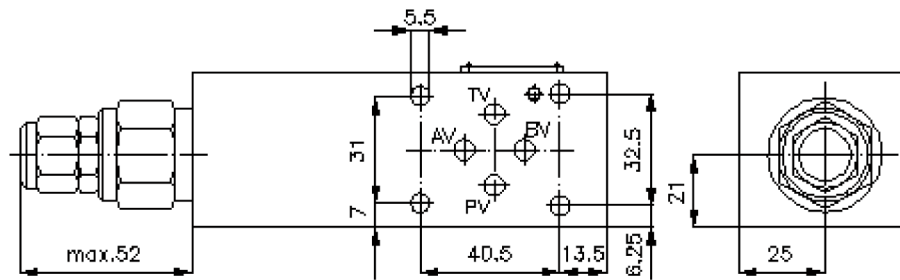
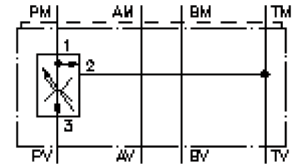


3-way flow control valve CETOP 3 ((sandwich plate) in P to T)

SR3Z-06.-PCV./.....

IZ-660-250-00

(subject to change)



3-way flow control valve CETOP 3 ((sandwich plate) in P to T)

SR3Z-06.-PCV./.....



Motrac Hydraulik GmbH
Siemensring 87 - D-47877 Willich
fon +49-(0)2154-8162.0 - fax +49-(0)2154-8162.499
e-mail info.miw@motracindustries.com
internet www.motracindustries.com

IZ-660-250-00

(subject to change)



Ordering example:

SR3Z - 06S - P CV C / 06.00
| | | | |
A **B** **C** **D** **E** **F**

Model code:

- | | |
|---|--|
| <p>A design
flow regulator valve
max. 50% volume reduction of the factory set flow
with mounting interface DIN 24340 form A sandwichplate design</p> <p>B size and material
06A = aluminum (F37)
06S = steel (9SMnPb28K resp. GGG-40)</p> <p>C function mode
P = in P acting (supply)</p> | <p>D flow regulator valve
CV = BFCV-10.-..</p> <p>E adjustment
S = screw adjustment
C = cap
K = handknob</p> <p>F requested regulated oil flow
(BFCV) specify in gpm
1 l/min = 0.265 Gpm
(1 Gpm = 3.785 l/min)</p> |
|---|--|

Technical Data:

- nominal pressure:** 350 bar (S)
250 bar (A)
- nominal flow:** 45 l/min
- weight:** 0.8 / 1.6 kg (A/S)
- flow regulator valve:** BFCV-10.-.-0-.. see datasheet no. CF-400-101-00
- included:** DT-06 = sealing plate with vulcanized O-ring (Viton FPM)