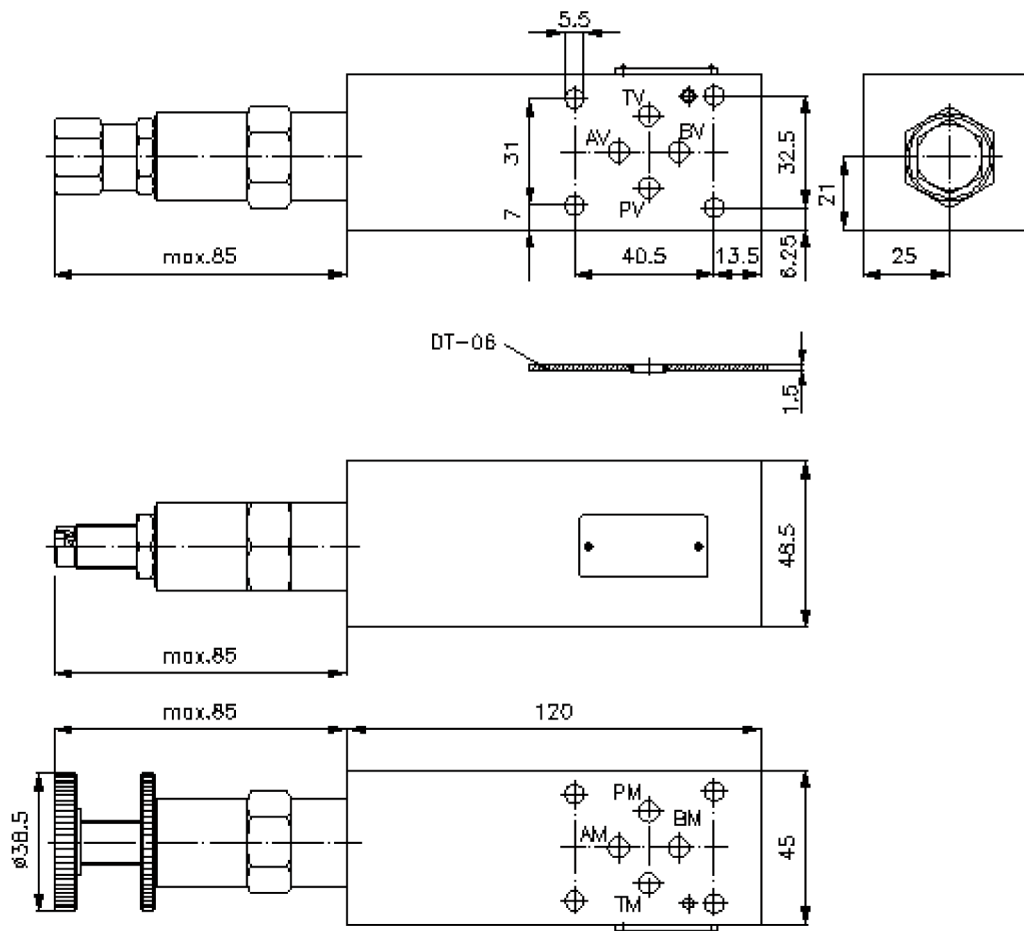
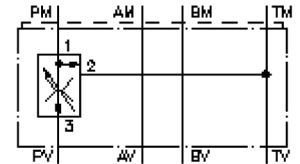


# 3-way flow control valve CETOP 3 ((sandwich plate) in P to T)

SR3Z-06.-P02./.....

IZ-660-200-00

(subject to change)



# 3-way flow control valve CETOP 3 ((sandwich plate) in P to T)

SR3Z-06.-P02./.....



Motrac Hydraulik GmbH  
Siemensring 87 - D-47877 Willich  
fon +49-(0)2154-8162.0 - fax +49-(0)2154-8162.499  
e-mail info.miw@motracindustries.com  
internet www.motracindustries.com

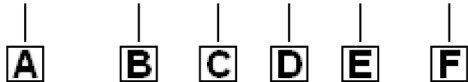
IZ-660-200-00

(subject to change)



## Ordering example:

SR3Z - 06S - P 02 C / 06.00



## Model code:

- |  |   |
|--|---|
| <p><b>A design</b><br/>flow regulator valve<br/>max. 50% volume reduction of the factory set flow<br/>with mounting interface DIN 24340 form A sandwichplate design</p> <p><b>B size and material</b><br/>06A = aluminum (F37)<br/>06S = steel (9SMnPb28K resp. GGG-40)</p> <p><b>C function mode</b><br/>P = in P acting (supply)</p> | <p><b>D flow regulator valve</b><br/>02 = PFR2-10.-..</p> <p><b>E adjustment</b><br/>S = screw adjustment<br/>C = cap<br/>K = handknob</p> <p><b>F requested regulated oil flow</b><br/>(PFR2) specify in gpm<br/>1 l/min = 0.265 Gpm<br/>(1 Gpm = 3.785 l/min)</p> |
|--|---|

## Technical Data:

- nominal pressure:** 250 bar (A)  
350 bar (S)
- nominal flow:** 60 l/min
- weight:** 0.8 / 1.6 kg (A/S)
- flow regulator valve:** PFR2-10.-.-0-.. see datasheet no. MF-250-100-00
- included:** DT-06 = sealing plate with vulcanized O-ring (Viton FPM)