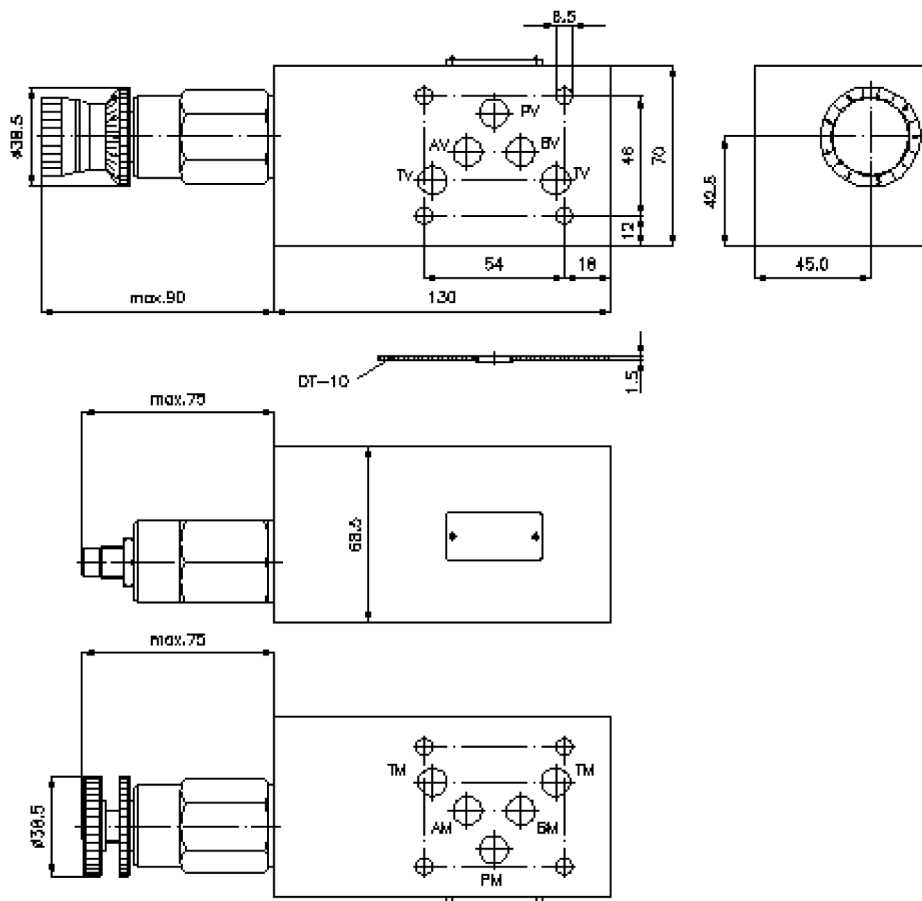
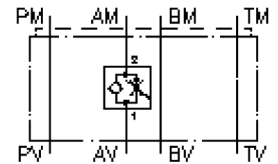


2-way flow regulation valve CETOP 5 ((sandwich plate) in A)

SR2Z-10.-AR1.

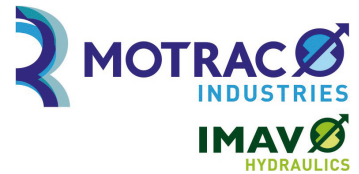
IZ-650-400-00

(subject to change)



2-way flow regulation valve CETOP 5 ((sandwich plate) in A)

SR2Z-10.-AR1.



Motrac Hydraulik GmbH
Siemensring 87 - D-47877 Willich
fon +49-(0)2154-8162.0 - fax +49-(0)2154-8162.499
e-mail info.miw@motracindustries.com
internet www.motracindustries.com

IZ-650-400-00

(subject to change)



Ordering example:

SR2Z - 10A - A R1 K
| | | | |
A **B** **C** **D** **E**

Model code:

- | | |
|--|--|
| <p>A design
flow regulator valve
with free reverse flow
with mounting interface DIN 24340 form A
sandwichplate design</p> <p>B size and material
10A = aluminum (F37)
10S = steel (9SMnPb28K resp. GGG-40)</p> | <p>C function mode
A = in A acting</p> <p>D flow regulator valve
R1 = FAR1-12.-... see data sheet no.: <u>MF-200-121-00</u></p> <p>E adjustment
S = screw adjustment
C = cap
K = handknob
H = calibrated handknob with locknut</p> |
|--|--|

Technical Data:

- note:** Supply and return regulation will change by turning the valve around the longitudinal axis.
- nominal pressure:** 250 bar (A)
350 bar (S)
- nominal flow:** 115 l/min
- weight:** 1.6 / 4.9 kg (A/S)
- flow regulator valve:** FAR1-12.-.-0-.. see datasheet no. MF-200-121-00
- included:** DT-10 = sealing plate with vulcanized O-ring (Viton FPM)