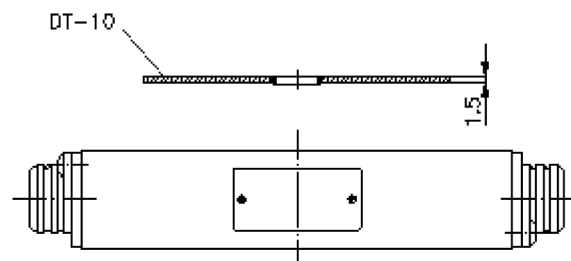
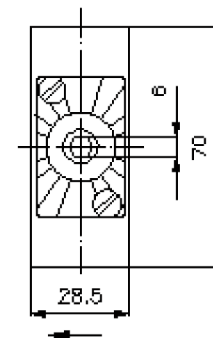
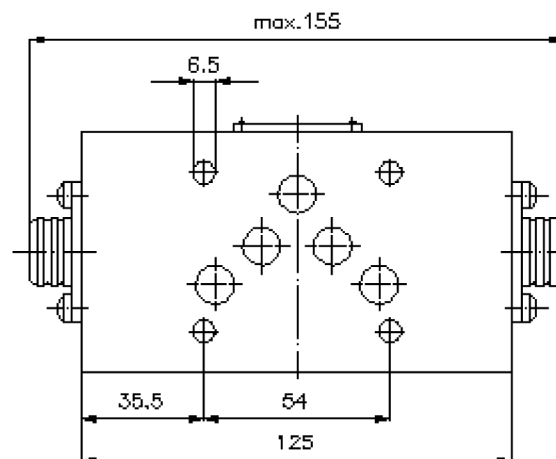
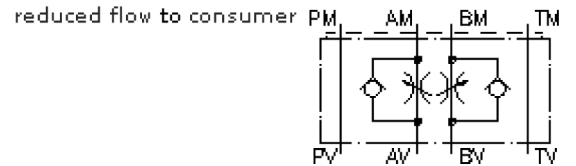


throttle check valve CETOP 5 ((sandwich plate) in A+B (to target)) DVZ-10-A+B

IZ-610-400-00

(subject to change)



throttle check valve CETOP 5 ((sandwich plate) in A+B (to target))

DVZ-10-A+B



Motrac Hydraulik GmbH
Siemensring 87 - D-47877 Willich
fon +49-(0)2154-8162.0 - fax +49-(0)2154-8162.499
e-mail info.miw@motracindustries.com
internet www.motracindustries.com

IZ-610-400-00

(subject to change)

Ordering example:

DVZ - 10 - A+B
| | |
A **B** **C**

Model code:

- | | | |
|--|----------------------------|--|
| A design
throttle check valve
with mounting interface DIN 24340 form A
sandwichplate design | B size
10 | C function mode
A+B = in A and B acting |
|--|----------------------------|--|

Technical Data:

- | | |
|--------------------------|--|
| note: | inlet and outlet regulation changes by rotating the valve around the vertical axis |
| nominal pressure: | 350 bar |
| nominal flow: | 100 l/min |
| weight: | 1.3 kg |
| included: | DT-10 = sealing plate with vulcanized O-ring (Viton FPM) |