

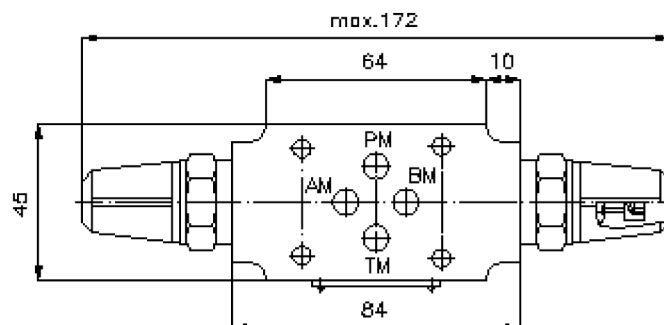
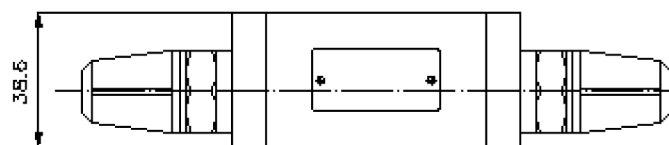
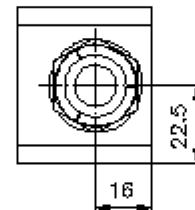
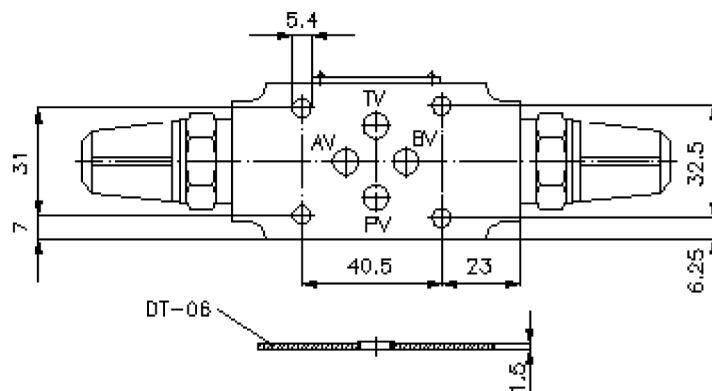
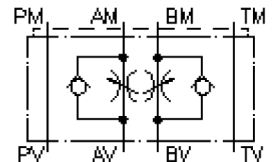
throttle check valve CETOP 3 ((sandwich plate) in A+B (to target)) DVZ-06-A+B

IZ-610-200-00

(subject to change)



reduced flow to consumer



throttle check valve CETOP 3 ((sandwich plate) in A+B (to target))

DVZ-06-A+B



Motrac Hydraulik GmbH
Siemensring 87 - D-47877 Willich
fon +49-(0)2154-8162.0 - fax +49-(0)2154-8162.499
e-mail info.miw@motracindustries.com
internet www.motracindustries.com

IZ-610-200-00

(subject to change)

Ordering example:

DVZ - 06 - A+B (z)
| | | |
A **B** **C** **D**

Model code:

- | | | | |
|----------|---|----------|---|
| A | design
throttle check valve
with mounting interface DIN 24340 form A
sandwichplate design | B | size
06 |
| | | C | function mode
A+B = in A and B acting |
| | | D | controlled flow option
reduced flow from consumer |

Technical Data:

- | | |
|--------------------------|---|
| note: | Supply and return regulation will change by turning the valve around the longitudinal axis. |
| nominal pressure: | 320 bar |
| nominal flow: | 80 l/min |
| weight: | 1.2 kg |
| included: | DT-06 = sealing plate with vulcanized O-ring (Viton FPM) |