

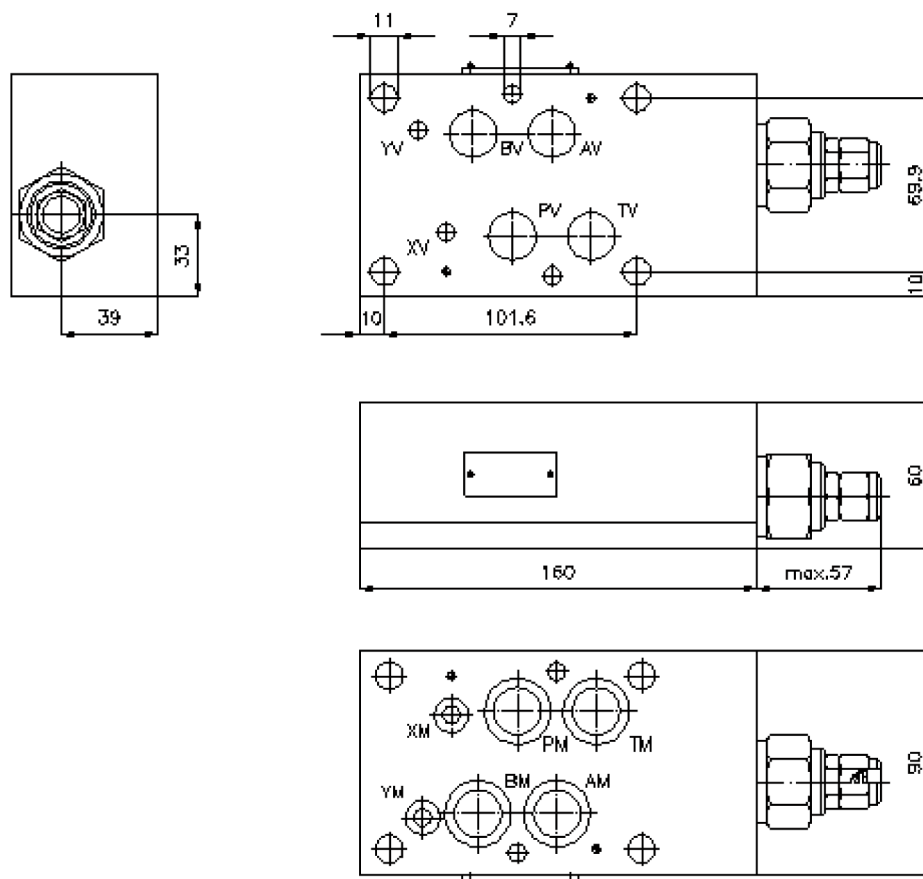
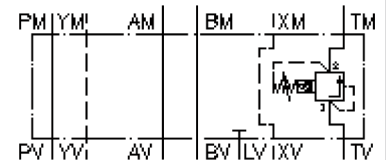
# pressure relief valve, CETOP 7 ((sandwich plate) in T, pilot operated) VSZ-16.-TPS./..



Motrac Hydraulik GmbH  
Siemensring 87 - D-47877 Willich  
fon +49-(0)2154-8162.0 - fax +49-(0)2154-8162.499  
e-mail info.miw@motracindustries.com  
internet www.motracindustries.com

IZ-510-552-00

(subject to change)



# pressure relief valve, CETOP 7 ((sandwich plate) in T, pilot operated) VSZ-16.-TPS./..

## Ordering example:

VSZ - 16A - T PS C / 30  
| | | | |  
**A** **B** **C** **D** **E** **F**

## Model code:

- |  |   |
|--|---|
| <p><b>A</b> <b>design</b><br/>backpressure valve<br/>with mounting interface DIN 24340 form A<br/>sandwichplate design</p> <p><b>B</b> <b>size and material</b><br/>16A = aluminum (F37)<br/>16S = steel (9SMnPb28K resp. GGG-40)</p> <p><b>C</b> <b>function mode</b><br/>T = in T acting</p> | <p><b>D</b> <b>relief valve</b><br/>PS = RVPS-12.-.. (pilot operated) see data<br/>sheet no.: <u>CP-110-121-00</u></p> <p><b>E</b> <b>adjustment</b><br/>C = cap</p> <p><b>F</b> <b>pressure range</b><br/>15 = 7.0 - 105 bar<br/>30 = 21.0 - 210 bar<br/>50 = 35.0 - 350 bar</p> |
|--|---|

## Technical Data:

<b>nominal pressure:</b>	250 bar (A) 350 bar (S)
<b>nominal flow:</b>	227 l/min
<b>weight:</b>	2.2 / 6.2 kg (A/S)
<b>included:</b>	4 pcs. O-ring 22.22 x 2.62 3 pcs. O-ring 9.19 x 2.62