

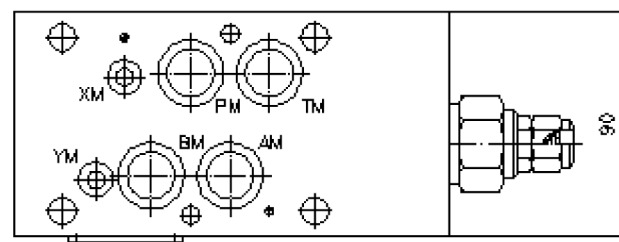
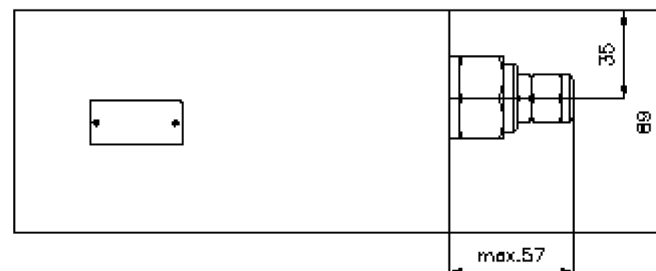
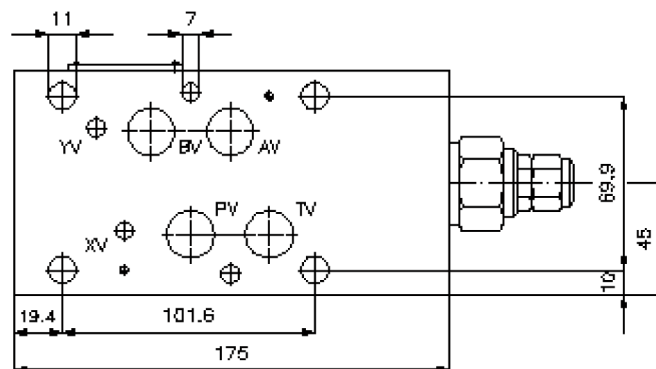
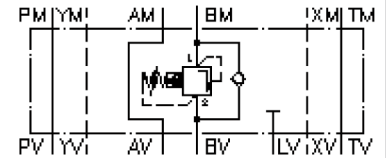
pressure relief valve, CETOP 7 ((sandwich plate) in B, pilot operated) VSZ-16.-BPS./..



Motrac Hydraulik GmbH
Siemensring 87 - D-47877 Willich
fon +49-(0)2154-8162.0 - fax +49-(0)2154-8162.499
e-mail info.miw@motracindustries.com
internet www.motracindustries.com

IZ-510-551-00

(subject to change)



pressure relief valve, CETOP 7 ((sandwich plate) in B, pilot operated) VSZ-16.-BPS./..

Ordering example:

VSZ - 16A - B PS C / 30
| | | | |
A **B** **C** **D** **E** **F**

Model code:

- | | |
|--|--|
| <p>A design
backpressure valve
with mounting interface DIN 24340 form A
sandwichplate design</p> <p>B size and material
16A = aluminum (F37)
16S = steel (9SMnPb28K resp. GGG-40)</p> <p>C function mode
B = in B acting</p> | <p>D relief valve
PS = RVPS-12.-.. (pilot operated) see data
sheet no.: CP-110-121-00</p> <p>E adjustment
C = cap</p> <p>F pressure range
15 = 7.0 - 105 bar
30 = 21.0 - 210 bar
50 = 35.0 - 350 bar</p> |
|--|--|

Technical Data:

nominal pressure:	250 bar (A) 350 bar (S)
nominal flow:	227 l/min
weight:	2.2 / 6.2 kg (A/S)
included:	4 pcs. O-ring 22.22 x 2.62 3 pcs. O-ring 9.19 x 2.62