

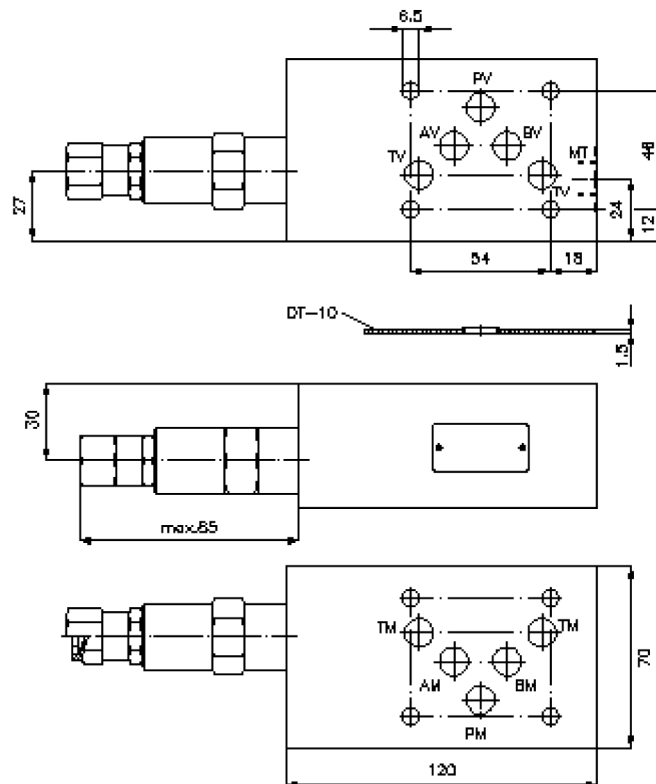
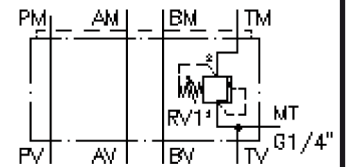
pressure relief valve, CETOP 5 ((sandwich plate) in T, direct acting) VSZ-10.-T01./..



Motrac Hydraulik GmbH
Siemensring 87 - D-47877 Willich
fon +49-(0)2154-8162.0 - fax +49-(0)2154-8162.499
e-mail info.miw@motracindustries.com
internet www.motracindustries.com

IZ-510-403-00

(subject to change)



pressure relief valve, CETOP 5 ((sandwich plate) in T, direct acting) VSZ-10.-T01./..



Motrac Hydraulik GmbH
Siemensring 87 - D-47877 Willich
fon +49-(0)2154-8162.0 - fax +49-(0)2154-8162.499
e-mail info.miw@motracindustries.com
internet www.motracindustries.com

IZ-510-403-00

(subject to change)



Ordering example:

VSZ - 10A - T 01 C / 35
| | | | | |
A **B** **C** **D** **E** **F**

Model code:

- | | |
|---|---|
| A design
backpressure valve
with mounting interface DIN 24340 form A
sandwichplate design | E adjustment
C = cap |
| B size and material
10A = aluminum (F37)
10S = steel (9SMnPb28K resp. GGG-40) | F pressure range
03 = 3.5 - 20 bar
09 = 7.0 - 62 bar
18 = 17.0 - 124 bar
30 = 34.0 - 210 bar
36 = 34.0 - 250 bar |
| C function mode
T = in T acting | |
| D relief valve
01 = RV1-10.-... (direct acting) see data
sheet no.: MP-100-100-00 | |

Technical Data:

- nominal pressure:** 250 bar (A)
350 bar (S)
- nominal flow:** 60 l/min
- weight:** 1.8 / 3.4 kg (A/S)
- included:** DT-10 = sealing plate with vulcanized O-ring (Viton FPM)