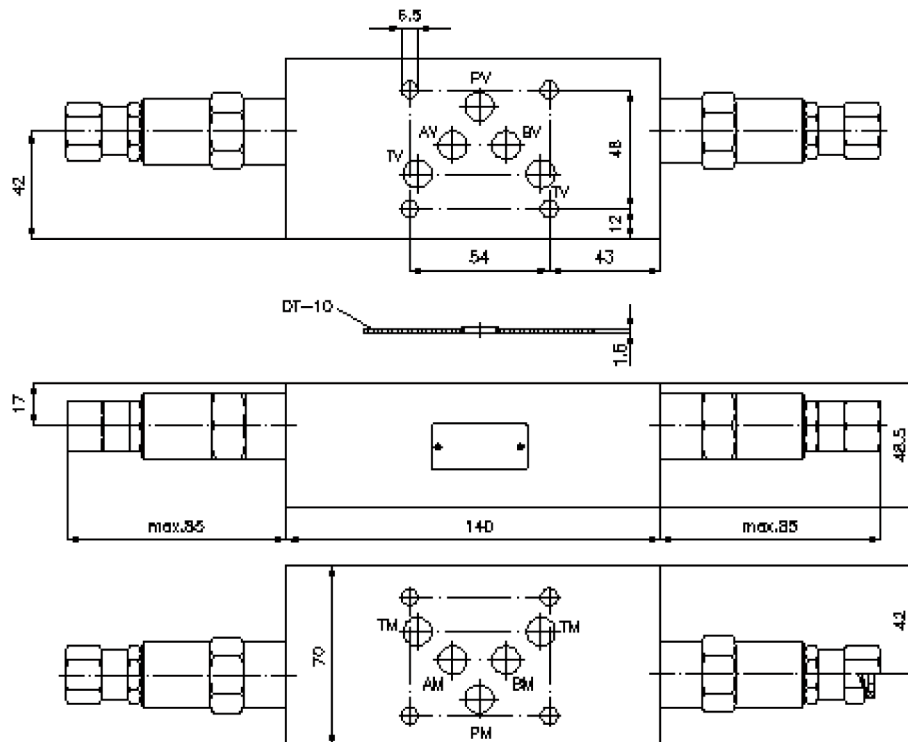
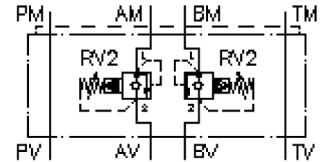


pressure relief valve, CETOP 5 ((sandwich plate) in A+B, pilot operated) VSZ-10.-A+B.../..

IZ-510-402-00

(subject to change)



pressure relief valve, CETOP 5 ((sandwich plate) in A+B, pilot operated)

VSZ-10.-A+B.../..



Motrac Hydraulik GmbH
Siemensring 87 - D-47877 Willich
fon +49-(0)2154-8162.0 - fax +49-(0)2154-8162.499
e-mail info.miw@motracindustries.com
internet www.motracindustries.com

IZ-510-402-00

(subject to change)

Ordering example:

VSZ - 10A - A+B 02 C / 35
| | | | | |
A **B** **C** **D** **E** **F**

Model code:

- | | |
|--|--|
| <p>A design
backpressure valve
with mounting interface DIN 24340 form A
sandwichplate design</p> <p>B size and material
10A = aluminum (F37)
10S = steel (9SMnPb28K resp. GGG-40)</p> <p>C function mode
A+B = in A and B acting</p> | <p>D relief valve
02 = RV2-10.-.. (pilot operated) see data
sheet no.: <u>MP-160-101-00</u></p> <p>E adjustment
C = cap</p> <p>F pressure range
03 = 3.5 - 20 bar
20 = 7.0 - 140 bar
35 = 17.0 - 240 bar
50 = 35.0 - 350 bar</p> |
|--|--|

Technical Data:

- nominal pressure:** 250 bar (A)
350 bar (S)
- nominal flow:** 114 l/min
- weight:** 1.8 / 3.4 kg (A/S)
- included:** DT-10 = sealing plate with vulcanized O-ring (Viton FPM)