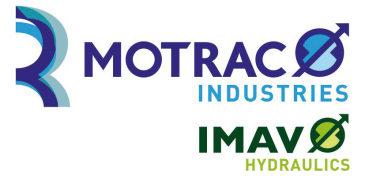


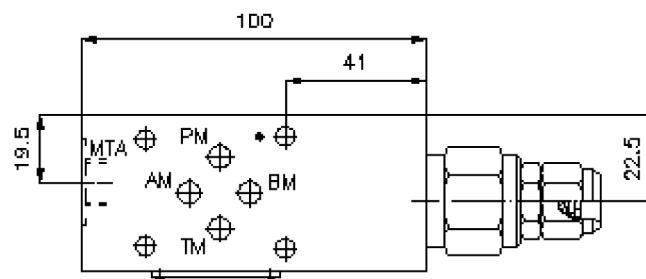
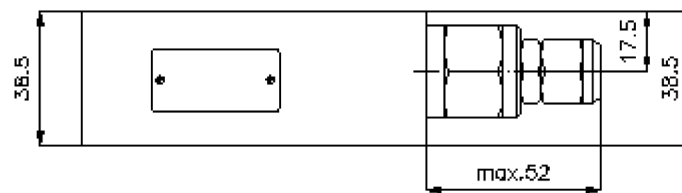
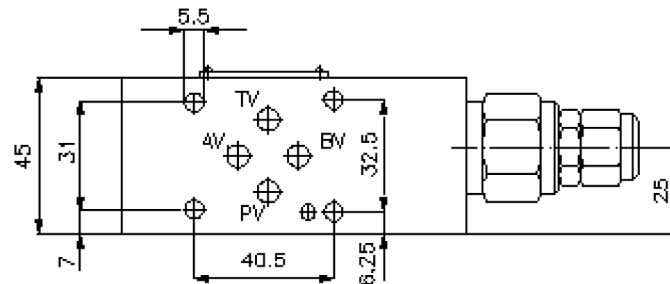
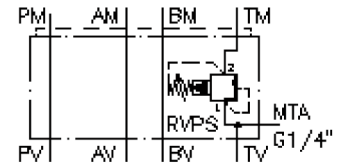
pressure relief valve, CETOP 3 ((sandwich plate) in T, pilot operated) VSZ-06.-TPS./..



Motrac Hydraulik GmbH
Siemensring 87 - D-47877 Willich
fon +49-(0)2154-8162.0 - fax +49-(0)2154-8162.499
e-mail info.miw@motracindustries.com
internet www.motracindustries.com

IZ-510-253-00

(subject to change)



pressure relief valve, CETOP 3 ((sandwich plate) in T, pilot operated)

VSZ-06.-TPS./..



Motrac Hydraulik GmbH
Siemensring 87 - D-47877 Willich
fon +49-(0)2154-8162.0 - fax +49-(0)2154-8162.499
e-mail info.miw@motracindustries.com
internet www.motracindustries.com

IZ-510-253-00

(subject to change)



Ordering example:

VSZ - 06A - T PS C / 30
| | | | | |
A **B** **C** **D** **E** **F**

Model code:

- | | |
|--|---|
| A design
backpressure valve
with mounting interface DIN 24340 form A
sandwichplate design | D relief valve
PS = RVPS-10.-.. (pilot operated) see data
sheet no.: <u>CP-110-101-00</u> |
| B size and material
06A = aluminum (F37)
06S = steel (9SMnPb28K resp. GGG-40) | E adjustment
C = cap |
| C function mode
T = in T acting | F pressure range
15 = 3.4 - 105 bar
30 = 3.4 - 210 bar
50 = 3.4 - 350 bar |

Technical Data:

nominal pressure:	250 bar (A) 350 bar (S)
nominal flow:	60 l/min
weight:	0.7 / 1.3 kg (A/S)
included:	DT-06 = sealing plate with vulcanized O-ring (Viton FPM)