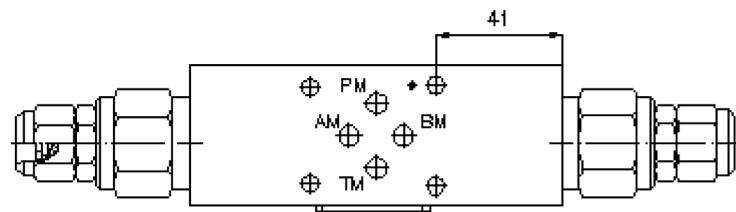
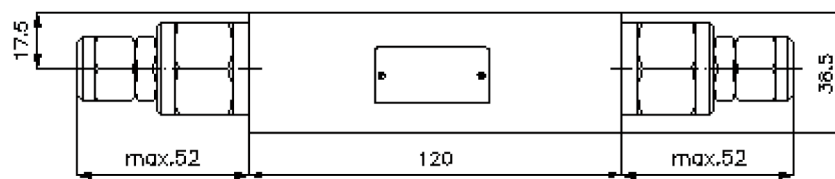
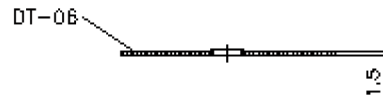
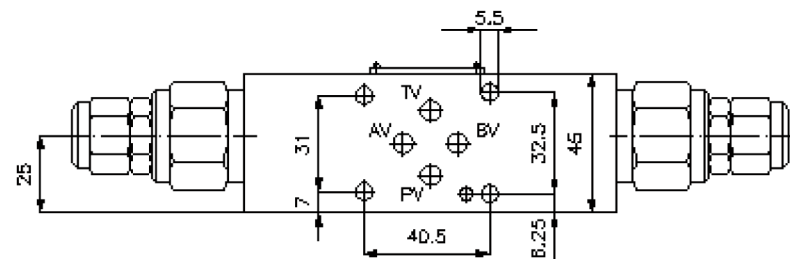
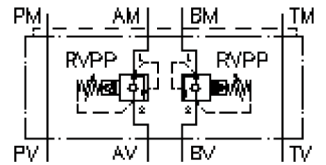


# pressure relief valve, CETOP3 ((sandwich plate) in A+B, pilot operated) VSZ-06.-A+BPP../..

IZ-510-252-00

(subject to change)



# pressure relief valve, CETOP3 ((sandwich plate) in A+B, pilot operated)

VSZ-06.-A+BPP./..



Motrac Hydraulik GmbH  
Siemensring 87 - D-47877 Willich  
fon +49-(0)2154-8162.0 - fax +49-(0)2154-8162.499  
e-mail info.miw@motracindustries.com  
internet www.motracindustries.com

IZ-510-252-00

(subject to change)



## Ordering example:

VSZ - 06A - A+B PP C / 30  
| | | | |  
**A** **B** **C** **D** **E** **F**

## Model code:

- |   |   |
|---|---|
| <p><b>A design</b><br/>backpressure valve<br/>with mounting interface DIN 24340 form A<br/>sandwichplate design</p> <p><b>B size and material</b><br/>06A = aluminum (F37)<br/>06S = steel (9SMnPb28K resp. GGG-40)</p> <p><b>C function mode</b><br/>A+B = in A and B acting</p> | <p><b>D relief valve</b><br/>PP = RVPP-10.-... (pilot operated) see data<br/>sheet no.: <u>CP-130-101-00</u></p> <p><b>E adjustment</b><br/>C = cap</p> <p><b>F pressure range</b><br/>15 = 3.4 - 105 bar<br/>30 = 3.4 - 210 bar<br/>50 = 3.4 - 350 bar</p> |
|---|---|

## Technical Data:

**nominal pressure:** 250 bar (A)  
350 bar (S)

**nominal flow:** 60 l/min

**weight:** 0.7 / 1.3 kg (A/S)

**included:** DT-06 = sealing plate with vulcanized O-ring (Viton FPM)