

3-way pressure reducing valve CETOP 7 ((sandwich plate) in B, pilot operated)

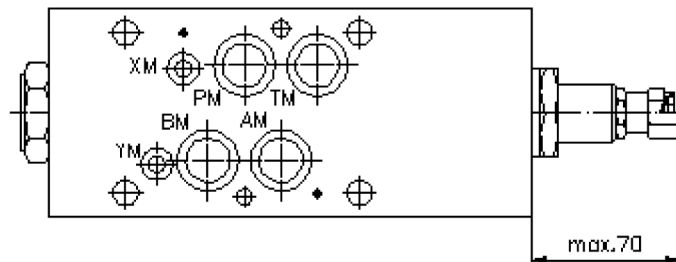
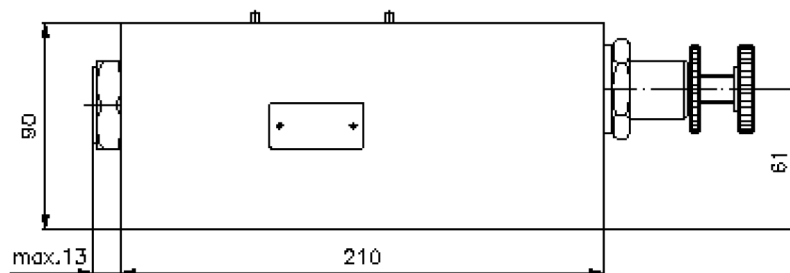
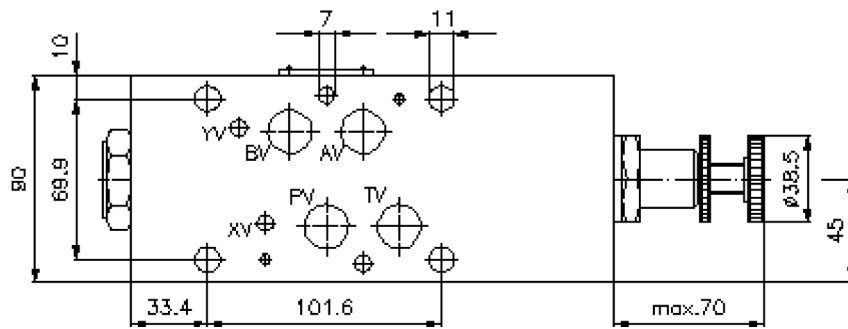
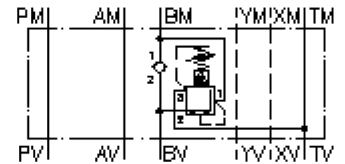
DMVZ-16.-B02./..



Motrac Hydraulik GmbH
Siemensring 87 - D-47877 Willich
fon +49-(0)2154-8162.0 - fax +49-(0)2154-8162.499
e-mail info.miw@motracindustries.com
internet www.motracindustries.com

IZ-440-502-00

(subject to change)



3-way pressure reducing valve CETOP 7 ((sandwich plate) in B, pilot operated)

DMVZ-16.-B02./..



Motrac Hydraulik GmbH
Siemensring 87 - D-47877 Willich
fon +49-(0)2154-8162.0 - fax +49-(0)2154-8162.499
e-mail info.miw@motracindustries.com
internet www.motracindustries.com

IZ-440-502-00

(subject to change)



Ordering example:

DMVZ - 16A - B 02 C / 60
| | | | | |
A **B** **C** **D** **E** **F**

Model code:

- | | |
|--|---|
| <p>A design
pressure regulator valve
with mounting interface DIN 24340 form A
sandwichplate design</p> <p>B size and material
16A = aluminum (F37)
16S = steel (9SMnPb28K resp. GGG-40)</p> <p>C function mode
B = in B acting</p> | <p>D pressure reducing valve
02 = PRV2-16.-.. (pilot operated) see data
sheet no.: <u>MP-240-161-00</u></p> <p>E adjustment
C = cap
K = handknob</p> <p>F pressure range (PRV2)
30 = 34.0 - 210 bar
60 = 70.0 - 415 bar</p> |
|--|---|

Technical Data:

nominal pressure: 250 bar (A)
350 bar (S)

nominal flow: 150 l/min

weight: 4.8 / 13.4 kg (A/S)

included: 4 pcs. O-ring 22.22 x 2.62
2 pcs. O-ring 9.19 x 2.62