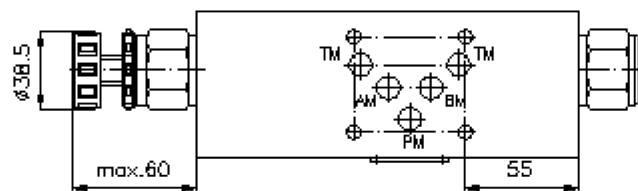
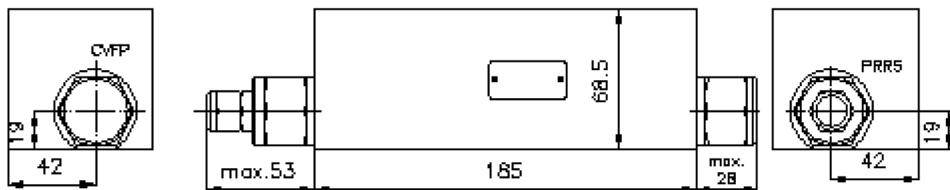
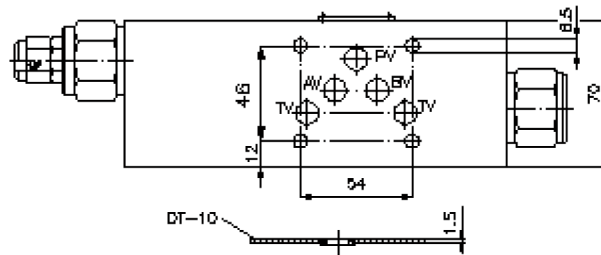
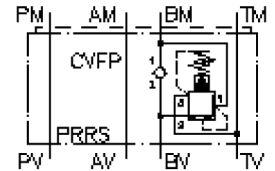


3-way pressure reducing valve CETOP 5 ((sandwich plate) in B, pilot operated) DMVZ-10.-BRS./12-..

IZ-435-452-00

(subject to change)



3-way pressure reducing valve CETOP 5 ((sandwich plate) in B, pilot operated)

DMVZ-10.-BRS./12-..



Motrac Hydraulik GmbH
Siemensring 87 - D-47877 Willich
fon +49-(0)2154-8162.0 - fax +49-(0)2154-8162.499
e-mail info.miw@motracindustries.com
internet www.motracindustries.com

IZ-435-452-00

(subject to change)



Ordering example:

DMVZ - 10A - B RS C / 12 - 30
| | | | | | |
A **B** **C** **D** **E** **F** **G**

Model code:

- | | |
|--|---|
| <p>A design
pressure regulation valve
with mounting interface DIN 24340 form A
sandwichplate design</p> <p>B size and material
10A = aluminum (F37)
10S = steel (9SMnPb28K resp. GGG-40)</p> <p>C function mode
B = in B acting</p> <p>D pressure reducing valve
12 = PRRS-12.-.. (pilot operated) see data
sheet no: <u>CP-210-121-00</u></p> | <p>E adjustment
C = cap
K = handknob</p> <p>F size of screw-in valve
PPRS-12.</p> <p>G pressure range (PPRS)
15 = 3.4 - 105 bar
30 = 3.4 - 210 bar
50 = 3.4 - 350 bar</p> |
|--|---|

Technical Data:

- | | |
|--------------------------|--|
| nominal pressure: | 250 bar (A)
350 bar (S) |
| nominal flow: | 115 l/min |
| weight: | 2.5 / 7.7 kg (A/S) |
| included: | DT-10 = sealing plate with vulcanized O-ring (Viton FPM) |