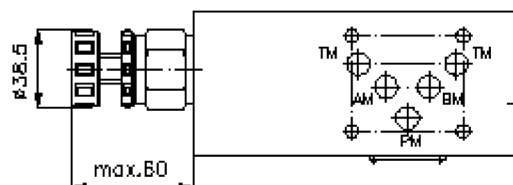
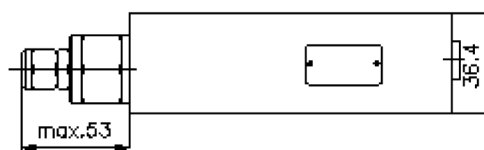
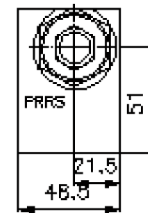
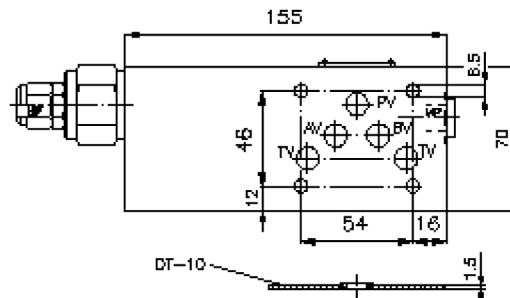
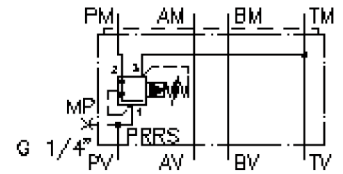


# 3-way pressure reducing valve CETOP 5 ((sandwich plate) in P, operated)

DMVZ-10.-PRS./12-..

**IZ-435-450-00**

(subject to change)



# 3-way pressure reducing valve CETOP 5 ((sandwich plate) in P, operated)

DMVZ-10.-PRS./12-..



Motrac Hydraulik GmbH  
Siemensring 87 - D-47877 Willich  
fon +49-(0)2154-8162.0 - fax +49-(0)2154-8162.499  
e-mail info.miw@motracindustries.com  
internet www.motracindustries.com

IZ-435-450-00

(subject to change)



## Ordering example:

DMVZ - 10A - P RS C / 12 - 30  
| | | | | | |  
**A** **B** **C** **D** **E** **F** **G**

## Model code:

- |   |   |
|---|---|
| <p><b>A</b> <b>design</b><br/>pressure regulator valve<br/>with mounting interface DIN 24340 form A<br/>sandwichplate design</p> <p><b>B</b> <b>size and material</b><br/>10A = aluminum (F37)<br/>10S = steel (9SMnPb28K resp. GGG-40)</p> <p><b>C</b> <b>function mode</b><br/>P = in P acting</p> <p><b>D</b> <b>pressure reducing valve</b><br/>12 = PRRS-12.-.. (pilot operated) see data<br/>sheet no: <u>CP-210-121-00</u></p> | <p><b>E</b> <b>adjustment</b><br/>C = cap<br/>K = handknob</p> <p><b>F</b> <b>size of screw-in valve</b><br/>PRRS-12.</p> <p><b>G</b> <b>pressure range (PRRS)</b><br/>15 = 3.4 - 105 bar<br/>30 = 3.4 - 210 bar<br/>50 = 3.4 - 350 bar</p> |
|---|---|

## Technical Data:

- |                          |  |
|--------------------------|--|
| <b>nominal pressure:</b> | 250 bar (A)<br>350 bar (S)                               |
| <b>nominal flow:</b>     | 115 l/min  |
| <b>weight:</b>           | 1.5 / 4.2 kg (A/S)                                       |
| <b>included:</b>         | DT-10 = sealing plate with vulcanized O-ring (Viton FPM) |