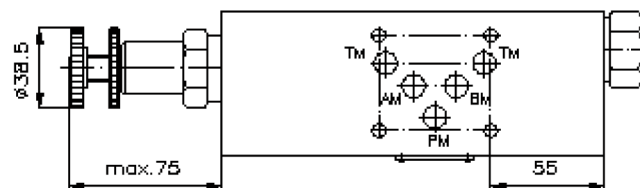
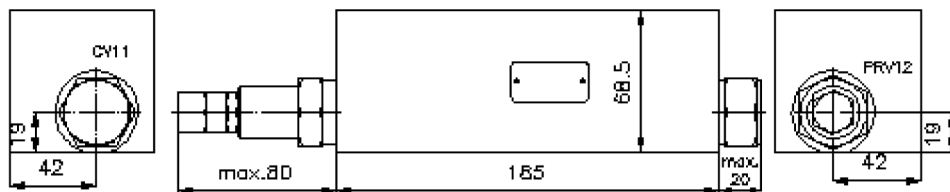
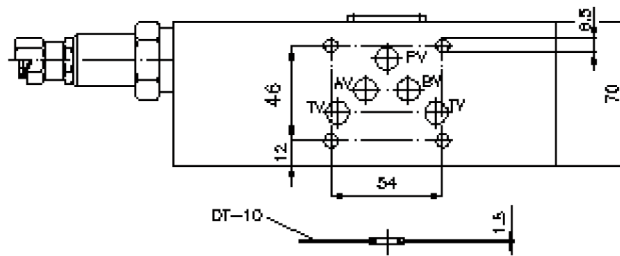
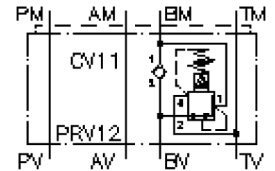


# 3-way pressure reducing valve CETOP 5 ((sandwich plate) in B, pilot operated) DMVZ-10.-B12./12-..



# 3-way pressure reducing valve CETOP 5 ((sandwich plate) in B, pilot operated)

DMVZ-10.-B12./12-..



Motrac Hydraulik GmbH  
Siemensring 87 - D-47877 Willich  
fon +49-(0)2154-8162.0 - fax +49-(0)2154-8162.499  
e-mail info.miw@motracindustries.com  
internet www.motracindustries.com

IZ-435-402-00

(subject to change)

## Ordering example:

DMVZ - 10A - B 12 C / 12 - 30  
| | | | | | |  
**A** **B** **C** **D** **E** **F** **G**

## Model code:

- |  |   |
|--|---|
| <b>A</b> <b>design</b><br>pressure regulator valve<br>with mounting interface DIN 24340 form A<br>sandwichplate design             | <b>E</b> <b>adjustment</b><br>C = cap<br>K = handknob   |
| <b>B</b> <b>size and material</b><br>10A = aluminum (F37)<br>10S = steel (9SMnPb28K resp. GGG-40)                                  | <b>F</b> <b>size of screw-in valve</b><br>PRV12-12.   |
| <b>C</b> <b>function mode</b><br>B = in B acting   | <b>G</b> <b>pressure range (PRV12)</b><br>15 = 10.0 - 100 bar<br>30 = 17.0 - 210 bar<br>50 = 24.0 - 350 bar |
| <b>D</b> <b>pressure reducing valve</b><br>12 = PRV12-12.-.. (pilot operated) see<br>data sheet no.: <a href="#">MP-240-121-00</a> |   |

## Technical Data:

- nominal pressure:** 250 bar (A)  
350 bar (S)
- nominal flow:** 115 l/min
- weight:** 2.5 / 7.7 kg (A/S)
- included:** DT-10 = sealing plate with vulcanized O-ring (Viton FPM)