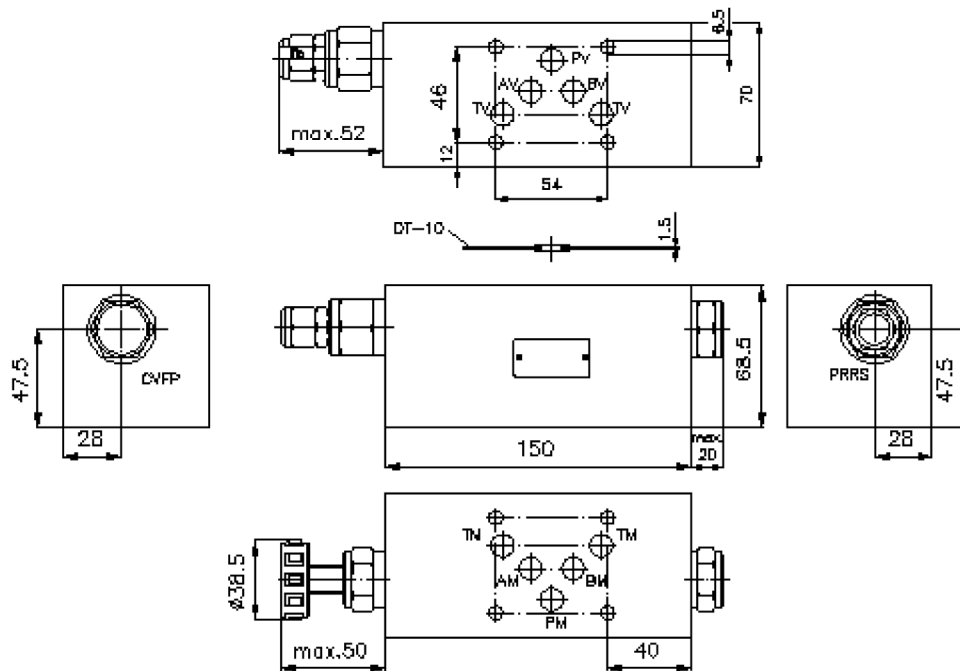
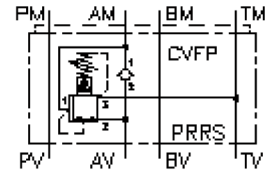


3-way pressure reducing valve CETOP 5 ((sandwich plate) in A, pilot operated) DMVZ-10.-ARS./..



3-way pressure reducing valve CETOP 5 ((sandwich plate) in A, pilot operated)

DMVZ-10.-ARS./..



Motrac Hydraulik GmbH
Siemensring 87 - D-47877 Willich
fon +49-(0)2154-8162.0 - fax +49-(0)2154-8162.499
e-mail info.miw@motracindustries.com
internet www.motracindustries.com

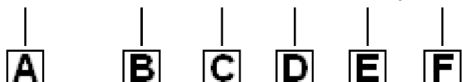
IZ-430-451-00

(subject to change)



Ordering example:

DMVZ - 10A - A RS C / 30



Model code:

- | | |
|---|---|
| <p>A design
pressure regulator valve
with mounting interface DIN 24340 form A
sandwichplate design</p> <p>B size and material
10A = aluminum (F37)
10S = steel (9SMnPb28K resp. GGG-40)</p> <p>C function mode
A = in A acting</p> | <p>D pressure reducing valve
RS = PRRS-10.-.. (pilot operated) see data
sheet no.: <u>CP-210-101-00</u></p> <p>E adjustment
C = cap
K = handknob</p> <p>F pressure range (PRRS)
15 = 3.4 - 105 bar
30 = 3.4 - 210 bar
50 = 3.4 - 350 bar</p> |
|---|---|

Technical Data:

- | | |
|--------------------------|--|
| nominal pressure: | 250 bar (A)
350 bar (S) |
| nominal flow: | 45 l/min |
| weight: | 2.2 / 5.6 kg (A/S) |
| included: | DT-10 = sealing plate with vulcanized O-ring (Viton FPM) |