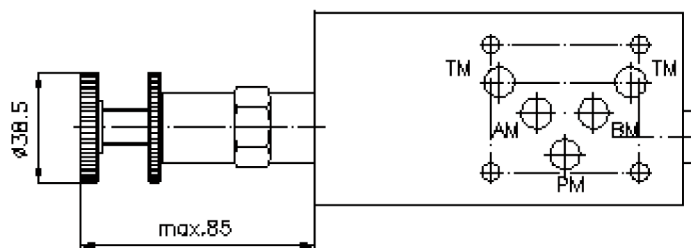
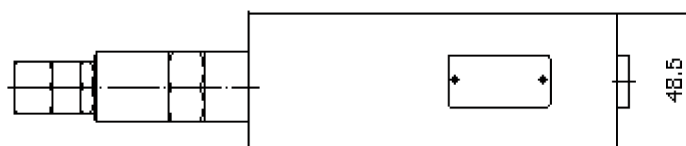
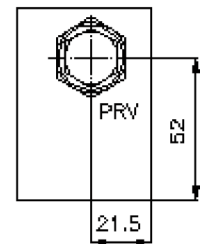
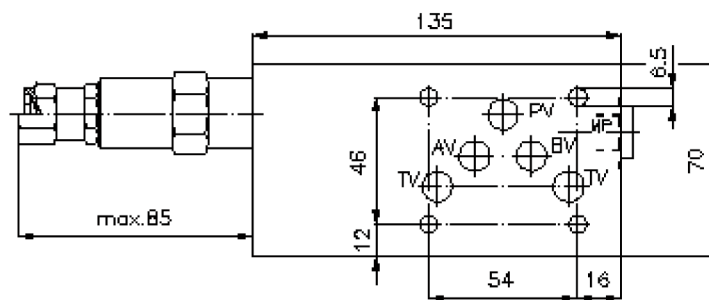
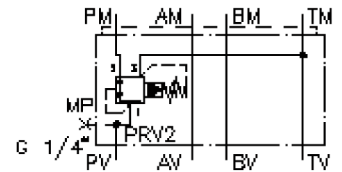


# 3-way pressure reducing valve CETOP 5 ((sandwich plate) in P, pilot operated)

DMVZ-10.-P02./..

**IZ-430-400-00**

(subject to change)



# way pressure reducing valve CETOP 5 ((sandwich plate) in P, pilot operated)

DMVZ-10.-P02./..



Motrac Hydraulik GmbH  
Siemensring 87 - D-47877 Willich  
fon +49-(0)2154-8162.0 - fax +49-(0)2154-8162.499  
e-mail info.miw@motracindustries.com  
internet www.motracindustries.com

IZ-430-400-00

(subject to change)



## Ordering example:

DMVZ - 10A - P 02 C / 12  
| | | | | |  
**A** **B** **C** **D** **E** **F**

## Model code:

- |   |  |
|---|--|
| <p><b>A</b> <b>design</b><br/>pressure regulation valve<br/>with mounting interface DIN 24340 form A<br/>sandwichplate design</p> <p><b>B</b> <b>size and material</b><br/>10A = aluminum (F37)<br/>10S = steel (9SMnPb28K resp. GGG-40)</p> <p><b>C</b> <b>function mode</b><br/>P = in P acting</p> | <p><b>D</b> <b>pressure reducing valve</b><br/>02 = PRV2-10.-.. (pilot operated) see data<br/>sheet no.: <u>MP-210-101-00</u></p> <p><b>E</b> <b>adjustment</b><br/>C = cap<br/>K = handknob</p> <p><b>F</b> <b>pressure range (PRV2)</b><br/>03 = 3.5 - 20 bar<br/>20 = 7.0 - 140 bar<br/>35 = 17.0 - 240 bar</p> |
|---|--|

## Technical Data:

- nominal pressure:** 250 bar (A)  
350 bar (S)
- nominal flow:** 40 l/min
- weight:** 1.3 / 3.6 kg (A/S)
- included:** DT-10 = sealing plate with vulcanized O-ring (Viton FPM)