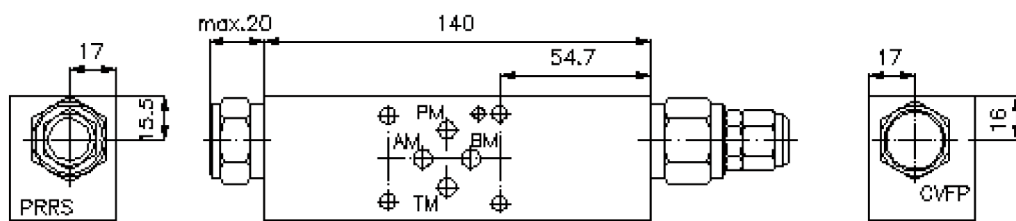
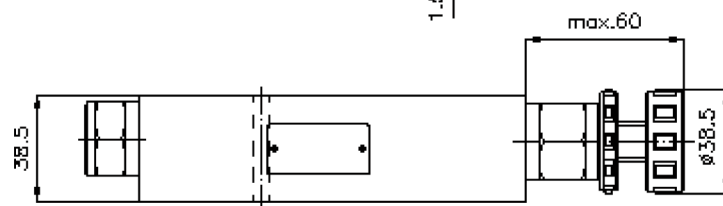
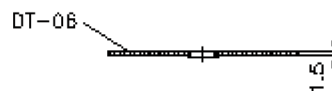
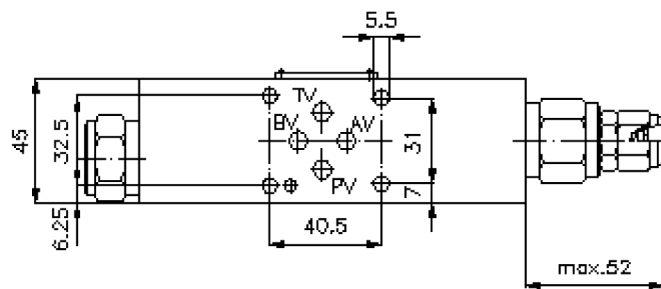
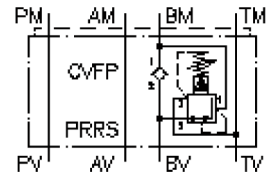
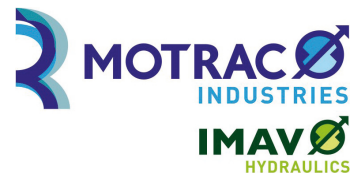


# 3-way pressure reducing valve CETOP 3 ((sandwich plate) in B, pilot operated) DMVZ-06.-BRS./..



# 3-way pressure reducing valve CETOP 3 ((sandwich plate) in B, pilot operated)

DMVZ-06.-BRS./..



Motrac Hydraulik GmbH  
Siemensring 87 - D-47877 Willich  
fon +49-(0)2154-8162.0 - fax +49-(0)2154-8162.499  
e-mail info.miw@motracindustries.com  
internet www.motracindustries.com

IZ-430-252-00

(subject to change)

## Ordering example:

DMVZ - 06S - B RS C / 15  
| | | | | |  
**A** **B** **C** **D** **E** **F**

## Model code:

- |   |  |
|---|--|
| <p><b>A</b> <b>design</b><br/>pressure regulation valve<br/>with mounting interface DIN 24340 form A<br/>sandwichplate design</p> <p><b>B</b> <b>size and material</b><br/>06S = steel (9SMnPb28K resp. GGG-40)</p> <p><b>C</b> <b>function mode</b><br/>B = in B acting</p> <p><b>D</b> <b>pressure reducing valve</b><br/>RS = PRRS-10.-.. (pilot operated) see data<br/>sheet no.: <a href="#">CP-210-101-00</a></p> | <p><b>E</b> <b>adjustment</b><br/>C = cap<br/>K = handknob</p> <p><b>F</b> <b>pressure range (PRRS)</b><br/>15 = 3.4 - 105 bar<br/>30 = 3.4 - 210 bar<br/>50 = 3.4 - 350 bar</p> |
|---|--|

## Technical Data:

- nominal pressure:** 250 bar (A)  
350 bar (S)
- nominal flow:** 45 l/min
- weight:** 0.8 / 1.9 kg (A/S)
- included:** DT-06 = sealing plate with vulcanized O-ring (Viton FPM)