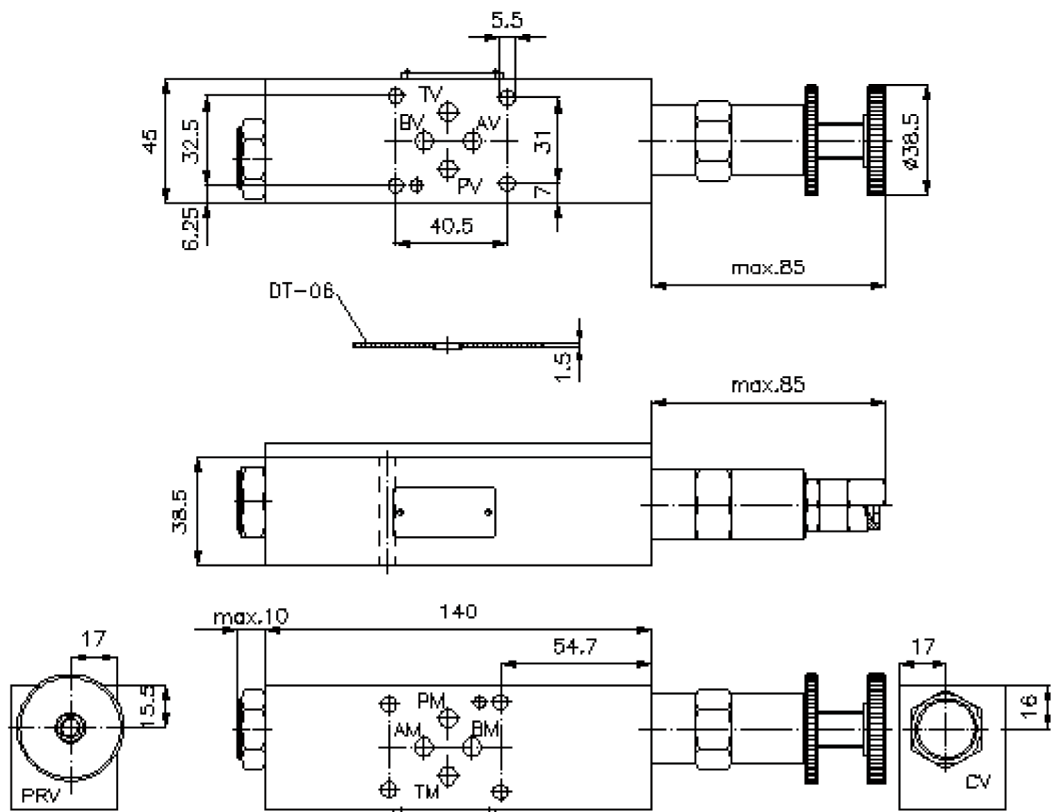
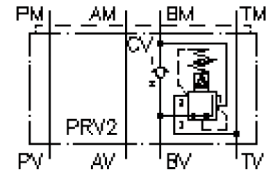


3-way pressure reducing valve CETOP 3 ((sandwich plate) in B, pilot operated) DMVZ-06.-B02./..

IZ-430-205-00

(subject to change)



3-way pressure reducing valve CETOP 3 ((sandwich plate) in B, pilot operated)

DMVZ-06.-B02./..



Motrac Hydraulik GmbH
Siemensring 87 - D-47877 Willich
fon +49-(0)2154-8162.0 - fax +49-(0)2154-8162.499
e-mail info.miw@motracindustries.com
internet www.motracindustries.com

IZ-430-205-00

(subject to change)



Ordering example:

DMVZ - 06S - B 02 C / 12
| | | | | |
A **B** **C** **D** **E** **F**

Model code:

- | | |
|--|---|
| A design
pressure regulator valve
with mounting interface DIN 24340 form A
sandwichplate design | F pressure range
pressure range (PRV1)
02 = 3.5 - 14 bar
06 = 7.0 - 40 bar
12 = 14.0 - 85 bar
24 = 30.0 - 165 bar
pressure range (PRV2)
03 = 3.5 - 20 bar
20 = 7.0 - 140 bar
35 = 17.0 - 240 bar |
| B size and material
06S = steel (9SMnPb28K resp. GGG-40) | |
| C function mode
B = in B acting | |
| D pressure reducing valve
01 = PRV1-10.-.. (direct acting) see data
sheet no.: MP-210-100-00
02 = PRV2-10.-.. (pilot operated) see data
sheet no.: MP-210-101-00 | |
| E adjustment
C = cap
K = handknob | |

Technical Data:

- nominal pressure:** 250 bar (A)
350 bar (S)
- nominal flow:** 40 l/min
- weight:** 0.8 / 1.9 kg (A/S)
- included:** DT-06 = sealing plate with vulcanized O-ring (Viton FPM)