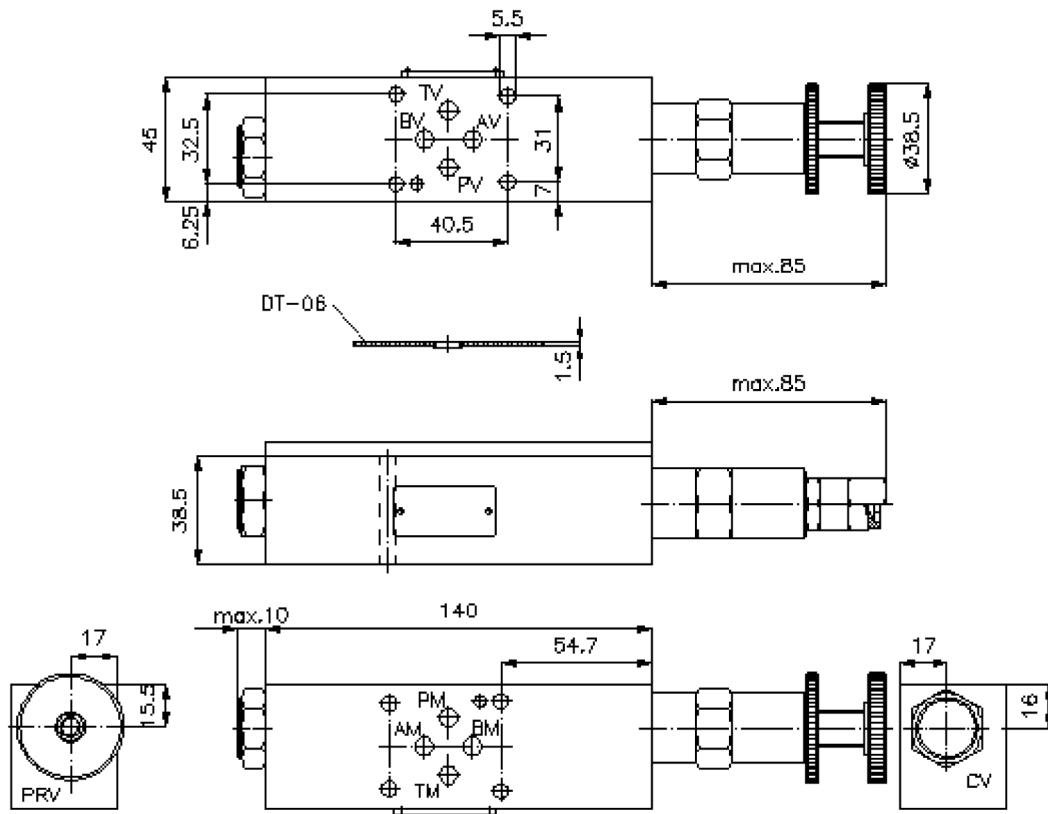
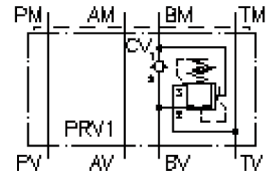


3-way pressure reducing valve CETOP 3 ((sandwich plate) in B, direct acting)

DMVZ-06.-B01./..



3-way pressure reducing valve CETOP 3 ((sandwich plate) in B, direct acting)

DMVZ-06.-B01./..



Motrac Hydraulik GmbH
Siemensring 87 - D-47877 Willich
fon +49-(0)2154-8162.0 - fax +49-(0)2154-8162.499
e-mail info.miw@motracindustries.com
internet www.motracindustries.com

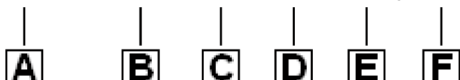
IZ-430-202-00

(subject to change)



Ordering example:

DMVZ - 06S - B 01 C / 12



Model code:

- A design**
pressure regulation valve
with mounting interface DIN 24340 form A
sandwichplate design
- B size and material**
06S = steel (9SMnPb28K resp. GGG-40)
- C function mode**
B = in B acting
- D pressure reducing valve**
01 = PRV1-10.-.. (direct acting) see data
sheet no.: [MP-210-100-00](#)
02 = PRV2-10.-.. (pilot operated) see data
sheet no.: [MP-210-101-00](#)
- E adjustment**
C = cap
K = handknob

- F pressure range**
pressure range (PRV1)
02 = 3.5 - 14 bar
06 = 7.0 - 40 bar
12 = 14.0 - 85 bar
24 = 30.0 - 165 bar
pressure range (PRV2)
03 = 3.5 - 20 bar
20 = 7.0 - 140 bar
35 = 17.0 - 240 bar

Technical Data:

- nominal pressure:** 250 bar (A)
350 bar (S)
- nominal flow:** 15 l/min
- weight:** 0.8 / 1.9 kg (A/S)
- included:** DT-06 = sealing plate with vulcanized O-ring (Viton FPM)