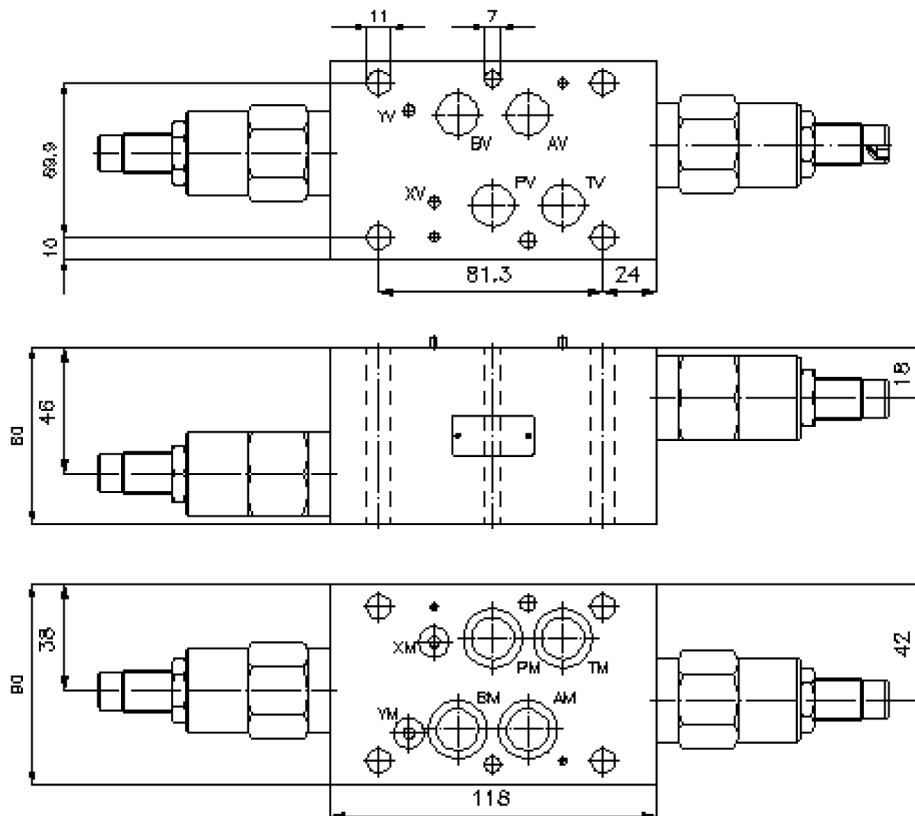
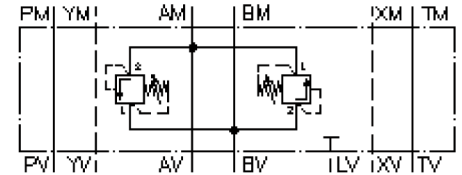


dual pressure relief valve, CETOP 7 ((sandwich plate) A to B + B to A) DDBVZ-16.-03S/..

IZ-425-500-00

(subject to change)



dual pressure relief valve, CETOP 7 ((sandwich plate) A to B + B to A)

DDBVZ-16.-03S/..



Motrac Hydraulik GmbH
Siemensring 87 - D-47877 Willich
fon +49-(0)2154-8162.0 - fax +49-(0)2154-8162.499
e-mail info.miw@motracindustries.com
internet www.motracindustries.com

IZ-425-500-00

(subject to change)



Ordering example:

DDBVZ - 16A - 03 S / 35
| | | | |
A **B** **C** **D** **E**

Model code:

- | | |
|---|--|
| A design
bi-directional relief-valve
with mounting interface DIN 24340 form A
sandwichplate design | D adjustment
S = screw adjustment |
| B size and material
16A = aluminum (F37)
16S = steel (9SMnPb28K resp. GGG-40) | E pressure range
RV3-16.-..
05 = 3.5 - 35 bar
13 = 35.0 - 90 bar
35 = 83.0 - 240 bar
50 = 140.0 - 350 bar |
| C relief valve
03 = RV3-16.-.. (direct acting) see data
sheet no.: MP-150-161-00 | |

Technical Data:

nominal pressure: 250 bar (A)
350 bar (S)

nominal flow: 305 l/min

weight: 3.8 / 7.9 kg (A/S)

included: 4 pcs. O-ring 22.22 x 2.62
2 pcs. O-ring 9.19 x 2.62