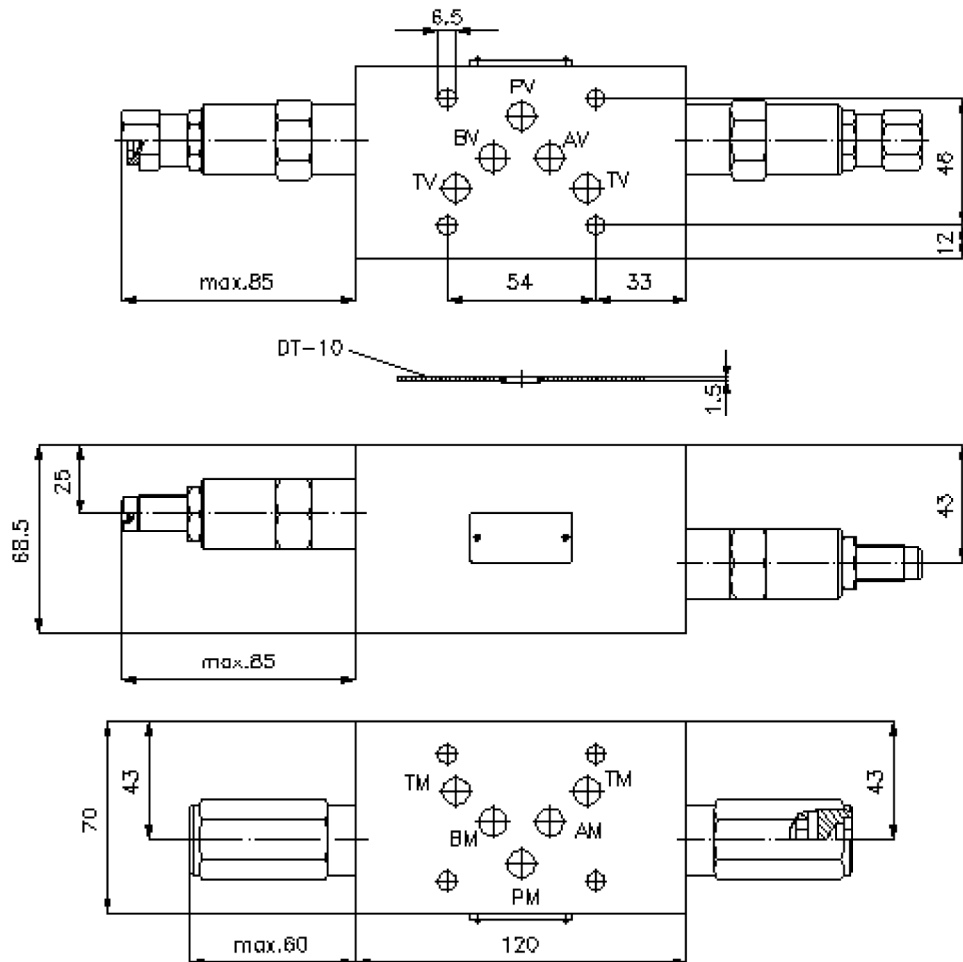
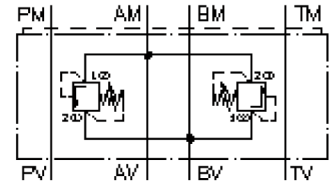


# dual pressure relief valve, CETOP 5 ((sandwich plate) A to B + B to A) DDBVZ-10.-01./..

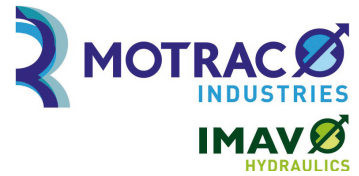
IZ-425-400-00

(subject to change)



# dual pressure relief valve, CETOP 5 ((sandwich plate) A to B + B to A)

DDBVZ-10.-01./..



Motrac Hydraulik GmbH  
Siemensring 87 - D-47877 Willich  
fon +49-(0)2154-8162.0 - fax +49-(0)2154-8162.499  
e-mail info.miw@motracindustries.com  
internet www.motracindustries.com

IZ-425-400-00

(subject to change)



## Ordering example:

DDBVZ - 10A - 01 C / 18  
|        |        |        |        |  
**A**    **B**    **C**    **D**    **E**

## Model code:

- |  |  |
|--|--|
| <p><b>A design</b><br/>bi-directional relief-valve<br/>with mounting interface DIN 24340 form A<br/>sandwichplate design</p> <p><b>B size and material</b><br/>10A = aluminum (F37)<br/>10S = steel (9SMnPb28K resp. GGG-40)</p> <p><b>C relief valve</b><br/>01 = RV1-10.-.. (direct acting) see data sheet no.: <a href="#">MP-100-100-00</a><br/>03 = RV3-10.-.. (direct acting) see data sheet no.: <a href="#">MP-130-101-00</a><br/>06 = RV6-10.-.. (direct acting) see data sheet no.: <a href="#">MP-110-101-00</a><br/>08 = RV8-10.-.. (direct acting) see data sheet no.: <a href="#">MP-140-101-00</a><br/>10 = RV10-10.-.. (direct acting) see data sheet no.: <a href="#">MP-110-103-00</a></p> <p><b>D adjustment</b><br/>J = internal (not for RV6 + RV10)<br/>S = screw adjustment<br/>C = cap</p> | <p><b>E pressure range</b><br/>RV1-10.-..<br/>03 = 3.5 - 20 bar<br/>09 = 7.0 - 62 bar<br/>18 = 17.0 - 124 bar<br/>30 = 34.0 - 210 bar<br/>36 = 34.0 - 250 bar<br/>RV3-10.-..<br/>03 = 3.5 - 20 bar<br/>06 = 7.0 - 41 bar<br/>09 = 14.0 - 62 bar<br/>18 = 20.0 - 124 bar<br/>36 = 41.0 - 250 bar<br/>RV6-10.-..<br/>25 = 3.4 - 175 bar<br/>50 = 140.0 - 350 bar<br/>RV8-10.-..<br/>04 = 3.5 - 30 bar<br/>12 = 7.0 - 86 bar<br/>25 = 17.0 - 175 bar<br/>50 = 38.0 - 350 bar<br/>RV10-10.-..<br/>02 = 1.7 - 17 bar<br/>05 = 3.5 - 35 bar<br/>10 = 17.0 - 70 bar</p> |
|--|--|

## Technical Data:

- nominal pressure:** 250 bar (A)  
350 bar (S)
- nominal flow:** 75 l/min
- weight:** 1.5 / 4.1 kg (A/S)
- included:** DT-10 = sealing plate with vulcanized O-ring (Viton FPM)