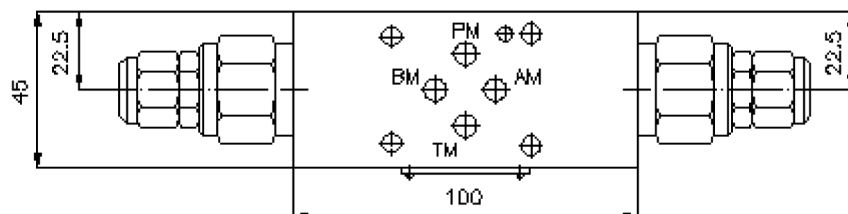
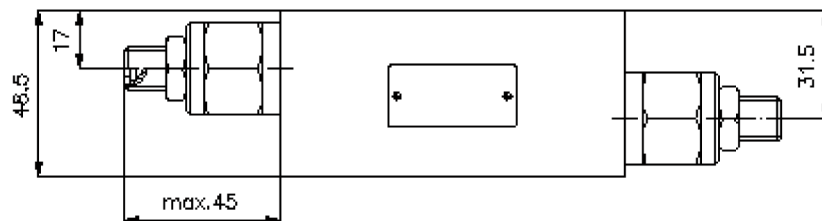
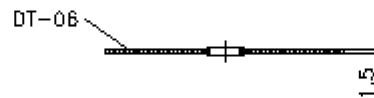
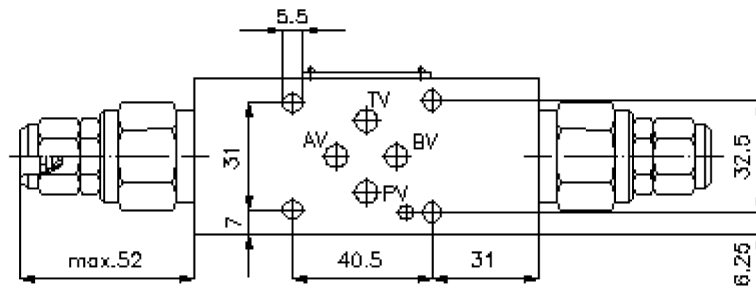
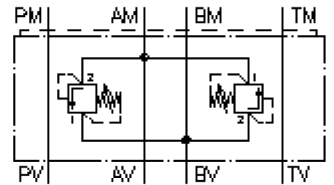


dual pressure relief valve, CETOP 3 ((sandwich plate) A to B + B to A) DDBVZ-06.-DA./..

IZ-425-250-00

(subject to change)



dual pressure relief valve, CETOP 3 ((sandwich plate) A to B + B to A)

DDBVZ-06.-DA./..



Motrac Hydraulik GmbH
Siemensring 87 - D-47877 Willich
fon +49-(0)2154-8162.0 - fax +49-(0)2154-8162.499
e-mail info.miw@motracindustries.com
internet www.motracindustries.com

IZ-425-250-00

(subject to change)



Ordering example:

DDBVZ - 06A - DA C / 30
| | | | |
A **B** **C** **D** **E**

Model code:

- | | |
|---|---|
| <p>A design
bi-directional relief-valve
with mounting interface DIN 24340 form A
sandwichplate design</p> <p>B size and material
06A = aluminum (F37)
06S = steel (9SMnPb28K resp. GGG-40)</p> <p>C relief valve
DA = RVDA-10.-.. see data sheet no.: <u>CP-120-101-00</u></p> | <p>D adjustment
S = screw adjustment
C = cap</p> <p>E pressure range
RVDA-10.-..
15 = 7.0 - 105 bar
30 = 21.0 - 210 bar
50 = 35.0 - 350 bar</p> |
|---|---|

Technical Data:

- | | |
|--------------------------|--|
| nominal pressure: | 250 bar (A)
350 bar (S) |
| nominal flow: | 75 l/min |
| weight: | 0.7 / 1.8 kg (A/S) |
| included: | DT-06 = sealing plate with vulcanized O-ring (Viton FPM) |