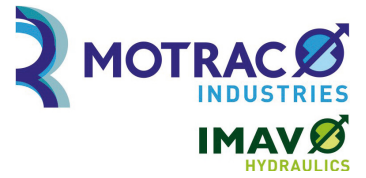


dual pressure relief valve, CETOP 3 ((sandwich plate) AB/BA)

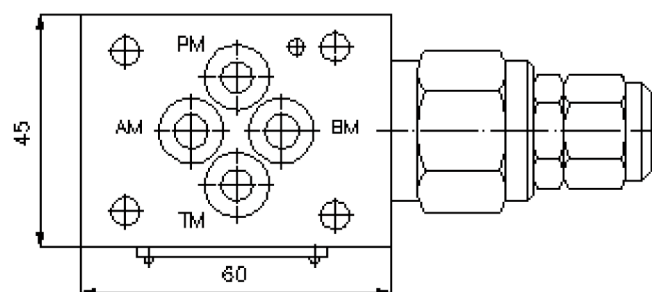
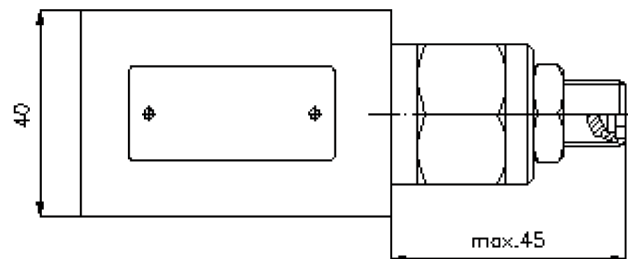
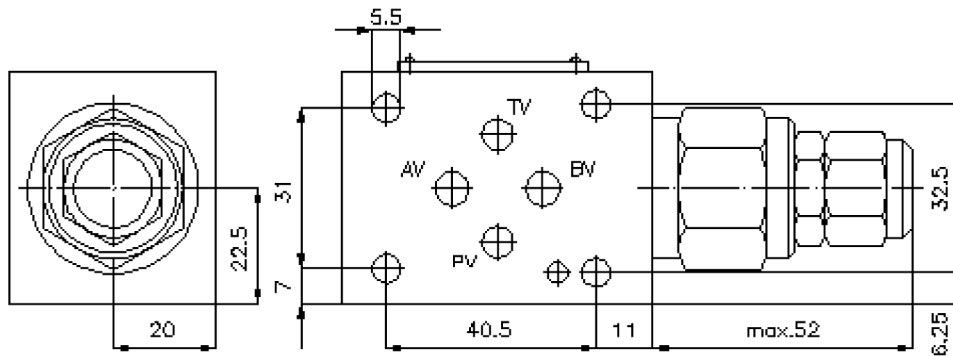
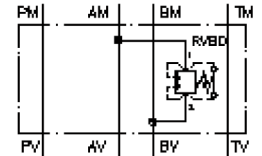
DDBVZ-06.-BD./..



Motrac Hydraulik GmbH
Siemensring 87 - D-47877 Willich
fon +49-(0)2154-8162.0 - fax +49-(0)2154-8162.499
e-mail info.miw@motracindustries.com
internet www.motracindustries.com

IZ-423-250-00

(Änderungen vorbehalten)



dual pressure relief valve, CETOP 3 ((sandwich plate) AB/BA)

DDBVZ-06.-BD./..



Motrac Hydraulik GmbH
Siemensring 87 - D-47877 Willich
fon +49-(0)2154-8162.0 - fax +49-(0)2154-8162.499
e-mail info.miw@motracindustries.com
internet www.motracindustries.com

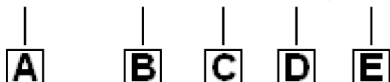
IZ-423-250-00

(Änderungen vorbehalten)



Ordering example:

DDBVZ - 06A - BD C / 30



Model code:

- | | |
|---|---|
| A design
bi-directional relief-valve
with mounting interface DIN 24340 form A
sandwichplate design | D adjustment
S = screw adjustment
C = cap |
| B size and material
06A = aluminum (F37)
06S = steel (9SMnPb28K resp. GGG-40) | E pressure range
pressure range (RVBD)
15 = 7.0 - 105 bar
30 = 21.0 - 210 bar
50 = 35.0 - 350 bar |
| C relief valve
BD = RVBD-10.-.. (direct acting) see data
sheet no.: CP-150-101-00 | |

Technical Data:

nominal pressure:	250 bar (A) 350 bar (S)
nominal flow:	76 l/min
weight:	0.5 / 1.1 kg (A/S)
included:	4 pcs. O-ring 9.25 x 1.78