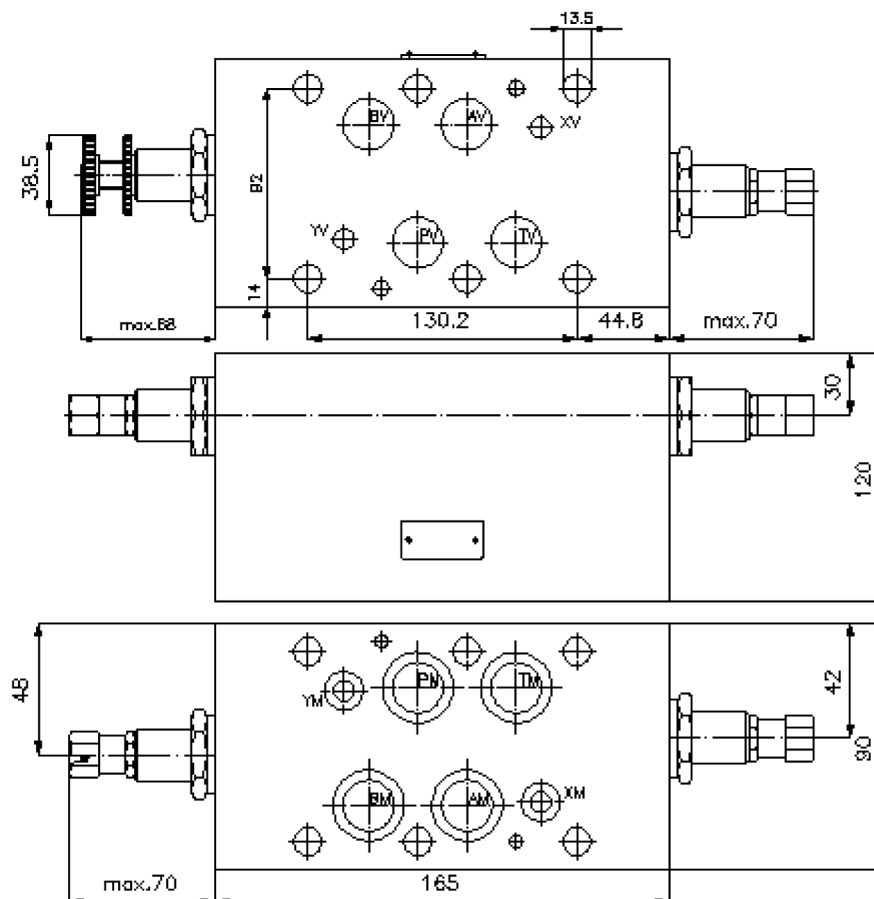
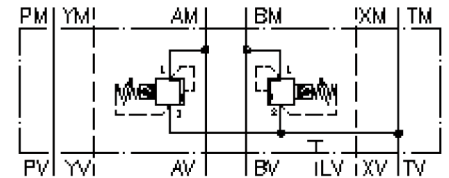


pressure relief valve, CETOP 8 ((sandwich plate) in A+B toT)

DBVZ-25.-A+B05./..



pressure relief valve, CETOP 8 ((sandwich plate) in A+B toT)

DBVZ-25.-A+B05./..



Motrac Hydraulik GmbH
Siemensring 87 - D-47877 Willich
fon +49-(0)2154-8162.0 - fax +49-(0)2154-8162.499
e-mail info.miw@motracindustries.com
internet www.motracindustries.com

IZ-420-600-00

(Änderungen vorbehalten)



Ordering example:

DBVZ - 25A - A+B 05 C / 30
| | | | | |
A **B** **C** **D** **E** **F**

Model code:

- | | |
|--|--|
| <p>A design
relief-valve
with mounting interface DIN 24340 form A
sandwichplate design</p> <p>B size and material
25A = aluminum (F37)
25S = steel (9SMnPb28K resp. GGG-40)</p> <p>C function mode
A+B = in A and B acting</p> | <p>D relief valve
05 = RV5-16.-.. (pilot operated) see data
sheet no.: <u>MP-170-161-00</u></p> <p>E adjustment
C = cap
K = handknob</p> <p>F pressure range (RV5)
30 = 34.0 - 210 bar
60 = 70.0 - 415 bar</p> |
|--|--|

Technical Data:

nominal pressure: 250 bar (A)
350 bar (S)

nominal flow: 303 l/min

weight: 8.2 / 22.4 kg (A/S)

included: 4 pcs. O-ring 28.17 x 3.53
2 pcs. O-ring 14.00 x 2.65