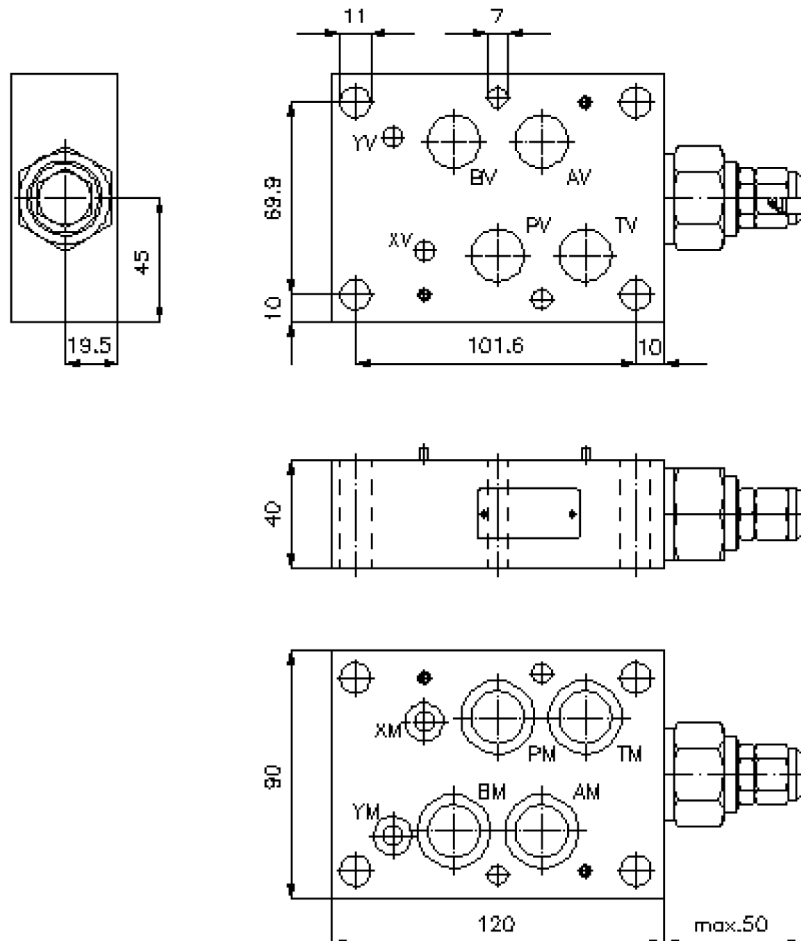
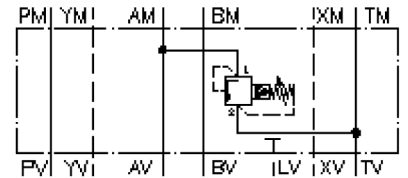


# pressure relief valve, CETOP 7 ((sandwich plate) in A to T)

DBVZ-16.-APS./..



# pressure relief valve, CETOP 7 ((sandwich plate) in A to T)

DBVZ-16.-APS./..



Motrac Hydraulik GmbH  
Siemensring 87 - D-47877 Willich  
fon +49-(0)2154-8162.0 - fax +49-(0)2154-8162.499  
e-mail info.miw@motracindustries.com  
internet www.motracindustries.com

IZ-410-551-00

(Änderungen vorbehalten)



## Ordering example:

DBVZ - 16A - A PS C / 15  
| | | | |  
**A** **B** **C** **D** **E** **F**

## Model code:

- |  |  |
|--|--|
| <b>A</b> <b>design</b><br>relief-valve<br>with mounting interface DIN 24340 form A<br>sandwichplate design | <b>D</b> <b>relief valve</b><br>PS = RVPS-12.-.. (pilot operated) see data<br>sheet no.: <a href="#">CP-110-121-00</a> |
| <b>B</b> <b>size and material</b><br>16A = aluminum (F37)<br>16S = steel (9SMnPb28K resp. GGG-40)          | <b>E</b> <b>adjustment</b><br>C = cap  |
| <b>C</b> <b>function mode</b><br>A = in A acting   | <b>F</b> <b>pressure range (RVPS)</b><br>15 = 6.9 - 105 bar<br>30 = 20.7 - 210 bar<br>50 = 34.5 - 350 bar              |

## Technical Data:

|                          |   |
|--------------------------|---|
| <b>nominal pressure:</b> | 250 bar (A)<br>350 bar (S)                                  |
| <b>nominal flow:</b>     | 227 l/min   |
| <b>weight:</b>           | 1.5 / 3.6 kg (A/S)  |
| <b>relief valve:</b>     | RVPS-12.-.. see datasheet no. <a href="#">CP-110-121-00</a> |
| <b>included:</b>         | 4 pcs. O-ring 22.22 x 2.62<br>2 pcs. O-ring 9.19 x 2.62     |