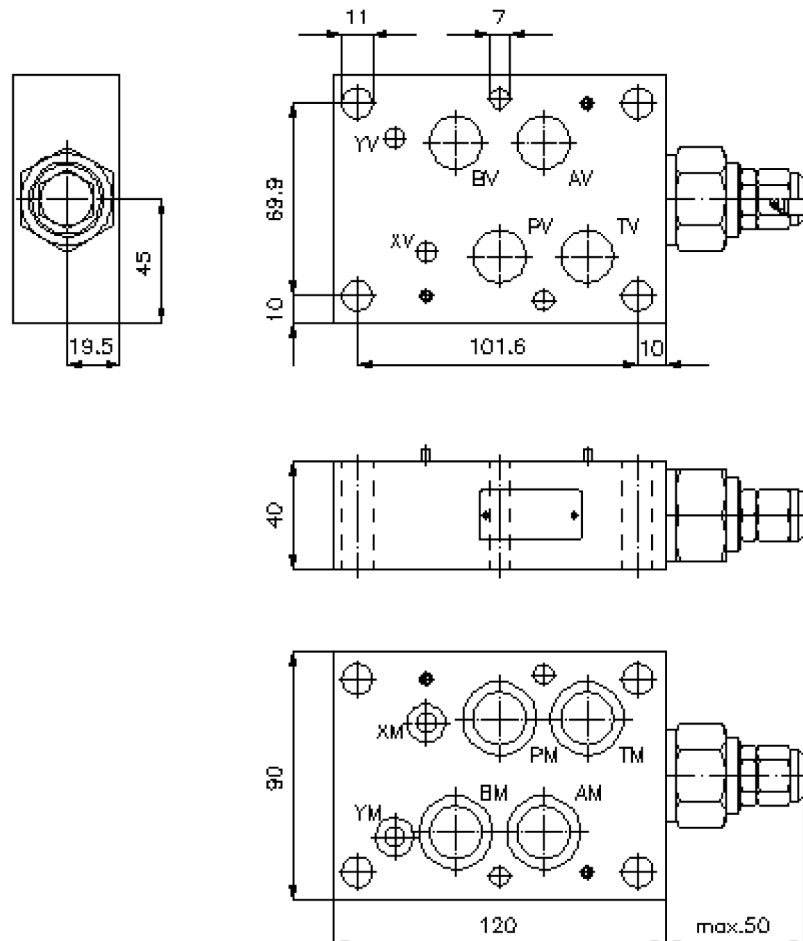
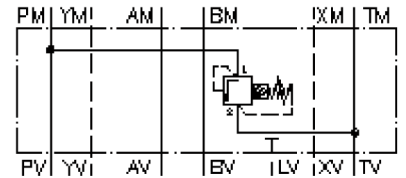


pressure relief valve, CETOP 7 ((sandwich plate) in P to T) DBVZ-16.-PPS./..

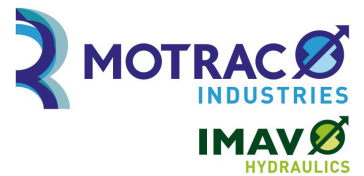
IZ-410-550-00

(Subject to change)



pressure relief valve, CETOP 7 ((sandwich plate) in P to T)

DBVZ-16.-PPS./..



Motrac Hydraulik GmbH
Siemensring 87 - D-47877 Willich
fon +49-(0)2154-8162.0 - fax +49-(0)2154-8162.499
e-mail info.miw@motracindustries.com
internet www.motracindustries.com

IZ-410-550-00

(Subject to change)



Ordering example:

DBVZ - 16A - P PS C / 15
| | | | |
A **B** **C** **D** **E** **F**

Model code:

- | | |
|--|--|
| A design
relief-valve
with mounting interface DIN 24340 form A
sandwichplate design | D relief valve
PS = RVPS-12.-.. (pilot operated) see data
sheet no.: CP-110-121-00 |
| B size and material
16A = aluminum (F37)
16S = steel (9SMnPb28K resp. GGG-40) | E adjustment
C = cap |
| C function mode
P = in P acting | F pressure range (RVPS)
15 = 6.9 - 105 bar
30 = 20.7 - 210 bar
50 = 34.5 - 350 bar |

Technical Data:

nominal pressure:	250 bar (A) 350 bar (S)
nominal flow:	227 l/min
weight:	1.5 / 3.6 kg (A/S)
relief valve:	RVPS-12.-.. see datasheet no. CP-110-121-00
included:	4 pcs. O-ring 22.22 x 2.62 2 pcs. O-ring 9.19 x 2.62