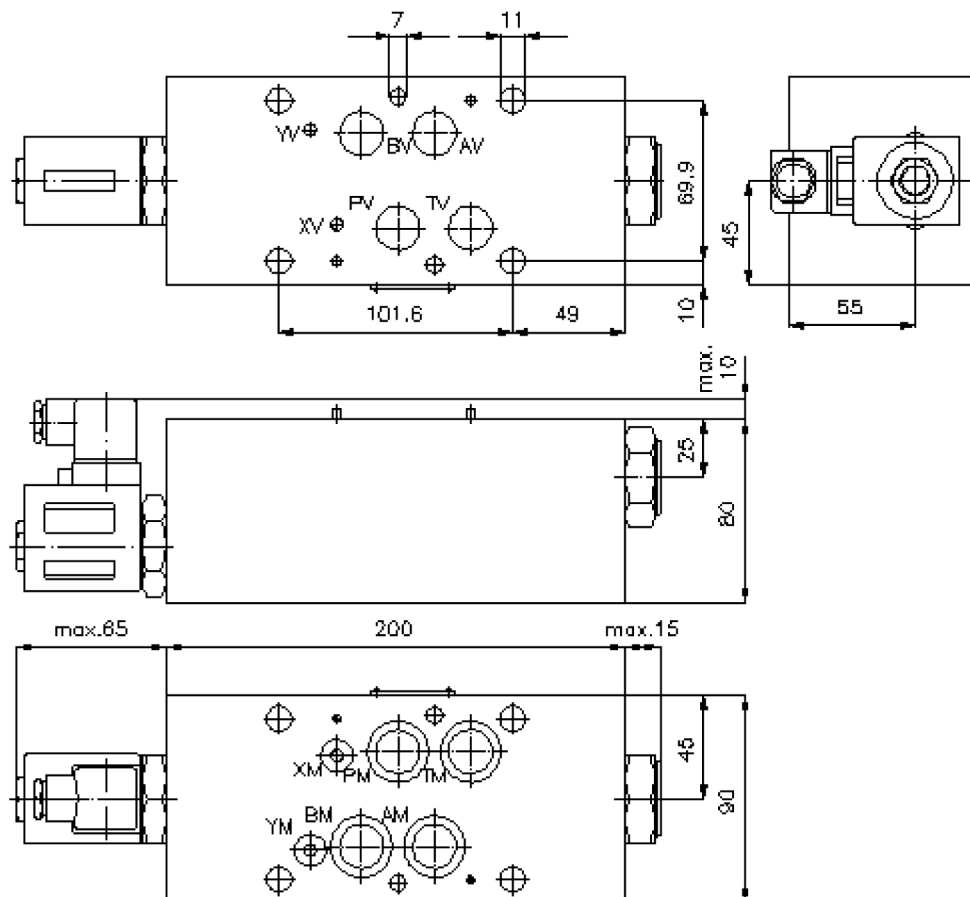
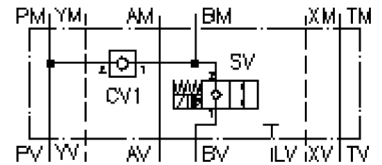


regeneration circuit plate CETOP 7 (sandwich plate)

DPSEZ-16.-B./.....

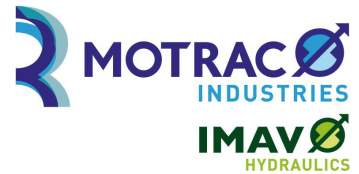
IZ-270-500-00

(subject to change)



regeneration circuit plate CETOP 7 (sandwich plate)

DPSEZ-16.-B./.....



Motrac Hydraulik GmbH
Siemensring 87 - D-47877 Willich
fon +49-(0)2154-8162.0 - fax +49-(0)2154-8162.499
e-mail info.miw@motracindustries.com
internet www.motracindustries.com

IZ-270-500-00

(subject to change)



Ordering example:

DPSEZ - 16 A - B C / 024D G H
| | | | | | |
A **B** **C** **D** **E** **F** **G**

Model code:

- A** **design**
regeneration plate
with mounting interface DIN 24340 form A
sandwichplate design
- B** **size and material**
16A = aluminum (F37)
16S = steel (9SMnPb28K resp. GGG-40)
- C** **function mode**
B = in B acting
- D** **standard position of solenoid valve**
C = normally closed
SV1-16.-C- see data sheet no.: [MS-240-159-00](#)
SV13-16.-C-.. see data sheet no.: [MS-240-161-00](#)
0 = normally open
SV3-16.-0-.. see data sheet no.: [MS-440-159-00](#)
SV13-16.-0-.. see data sheet no.: [MS-440-161-00](#)
- E** **voltage**
DC current:
012D = 12V DC
024D = 24V DC
AC current:
120A = 120V AC
240A = 240V AC
other voltage on request
- F** **power supply**
G = DIN 43650 connector, other
connectors see data sheet no.: MS-010-000-00
- G** **H = high pressure variant only for (SV13)**
for steel-design only

Technical Data:

- note:** port "A" must be connected with the bottom side of the cylinder.
- nominal pressure:** 210 bar (A)
350 bar (S)
- nominal flow:** 132 l/min
- weight:** 4.6 / 11.11 kg (A/S)
- screw in valve:** check valve CV1-16.-.. see datasheet no. [MC-140-160-00](#)
- included:** 3 pcs. O-ring 22.22 x 2.62
3 pcs. O-ring 9.19 x 2.62