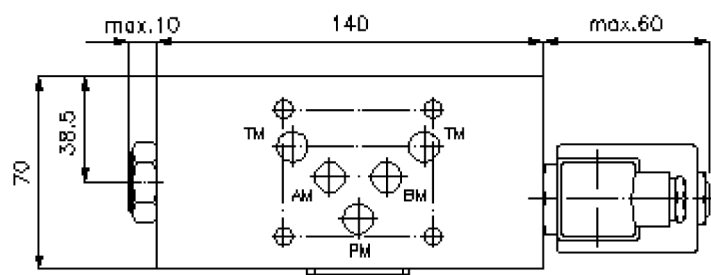
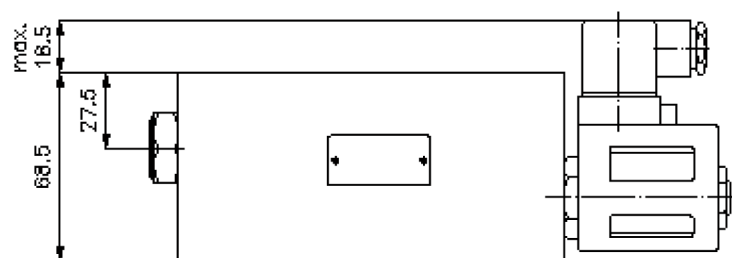
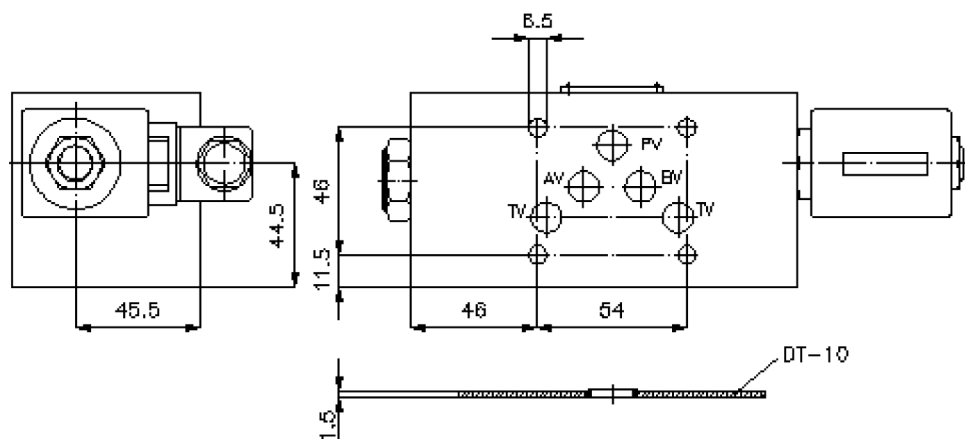
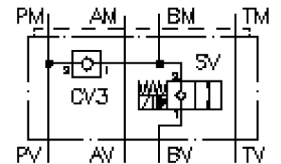


# regeneration circuit plate CETOP 5 (sandwich plate)

DPSEZ-10.-B./.....

IZ-270-400-00

(subject to change)



# regeneration circuit plate CETOP 5 (sandwich plate)

DPSEZ-10.-B./.....



Motrac Hydraulik GmbH  
Siemensring 87 - D-47877 Willich  
fon +49-(0)2154-8162.0 - fax +49-(0)2154-8162.499  
e-mail info.miw@motracindustries.com  
internet www.motracindustries.com

IZ-270-400-00

(subject to change)



## Ordering example:

DPSEZ - 10A - B C / 024D G H  
| | | | | | |  
**A** **B** **C** **D** **E** **F** **G**

## Model code:

- |   |   |
|---|---|
| <p><b>A</b> <b>design</b><br/>regeneration plate<br/>with mounting interface DIN 24340 form A<br/>sandwichplate design</p> <p><b>B</b> <b>size and material</b><br/>10A = aluminum (F37)<br/>10S = steel (9SMnPb28K resp. GGG-40)</p> <p><b>C</b> <b>function mode</b><br/>B = in B acting</p> <p><b>D</b> <b>standard position of solenoid valve</b><br/>C = normally closed<br/>SV3-10.-C-.. see data sheet no.: <a href="#">MS-240-099-00</a><br/>SV13-10.-C-.. see data sheet no.: <a href="#">MS-240-101-00</a><br/>0 = normally open<br/>SV3-10.-0-.. see data sheet no.: <a href="#">MS-430-099-00</a><br/>SV13-10.-0-.. see data sheet no.: <a href="#">MS-430-101-00</a></p> | <p><b>E</b> <b>voltage</b><br/>DC current:<br/>012D = 12V DC<br/>024D = 24V DC<br/>AC current:<br/>120A = 120V AC<br/>240A = 240V AC<br/>other voltage on request</p> <p><b>F</b> <b>power supply</b><br/>G = DIN 43650 connector, other<br/>connectors see data sheet no.: MS-010-000-00</p> <p><b>G</b> <b>function mode</b><br/>H = high pressure variant only bei SV11-10.-3-..</p> |
|---|---|

## Technical Data:

- |                          |  |
|--------------------------|--|
| <b>note:</b>             | port "A" must be connected with the bottom side of the cylinder.       |
| <b>nominal pressure:</b> | 210 bar (A)<br>350 bar (S)   |
| <b>nominal flow:</b>     | 45 l/min   |
| <b>weight:</b>           | 1.8 / 4.9 kg (A/S)   |
| <b>screw in valve:</b>   | check valve CV3-10.-.. see datasheet no. <a href="#">MC-130-100-00</a> |
| <b>included:</b>         | DT-10 = sealing plate with vulcanized O-ring (Viton FPM)               |