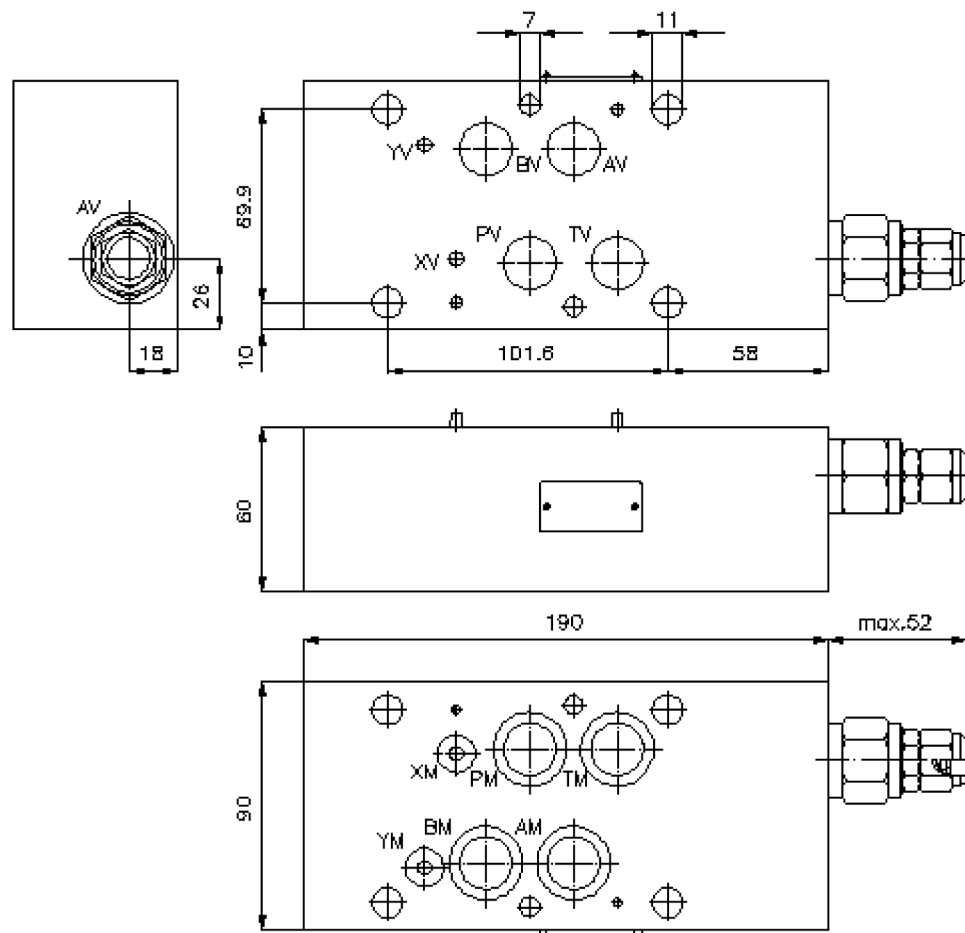
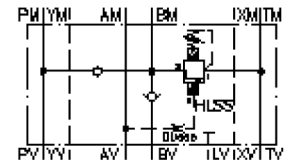


regeneration circuit plate CETOP 7 ((sandwich plate) in B)

DPSCZ-16S-B/..

IZ-250-550-00

(subject to change)



regeneration circuit plate CETOP 7 ((sandwich plate) in B)

DPSCZ-16S-B/..



Motrac Hydraulik GmbH
Siemensring 87 - D-47877 Willich
fon +49-(0)2154-8162.0 - fax +49-(0)2154-8162.499
e-mail info.miw@motracindustries.com
internet www.motracindustries.com

IZ-250-550-00

(subject to change)

Ordering example:

DPSCZ - 16A - B / 12
| | | |
A **B** **C** **D**

Model code:

- | | |
|--|--|
| A design
regeneration plate
with mounting interface DIN 24340 form A
sandwichplate design | D pressure range
hi-low sequence valve HLSV-10.-.. (AV)
15 = 20.7 - 103 bar
25 = 69.0 - 172 bar
25 = 138.0 - 276 bar |
| B size and material
16S = steel (9SMnPb28K resp. GGG-40) | |
| C function mode
B = in B acting | |

Technical Data:

note:	port "A" must be connected with the bottom side of the cylinder. Setting of the sequence valve must be at least 10 - 20% below the system pressure. e.g. system pressure = 60 bar; sequence valve = 50 bar = pressure setting 12
nominal pressure:	350 bar
nominal flow:	150 l/min
weight:	9.1 kg
relief valve:	high low sequence valve HLSS-10.-.. see datasheet no. CP-340-101-00
included:	3 pcs. O-Ring 22.22 x 2.62 3 pcs. O-Ring 9.19 x 2.62 2 pcs. O-Ring 25.00 x 2.50