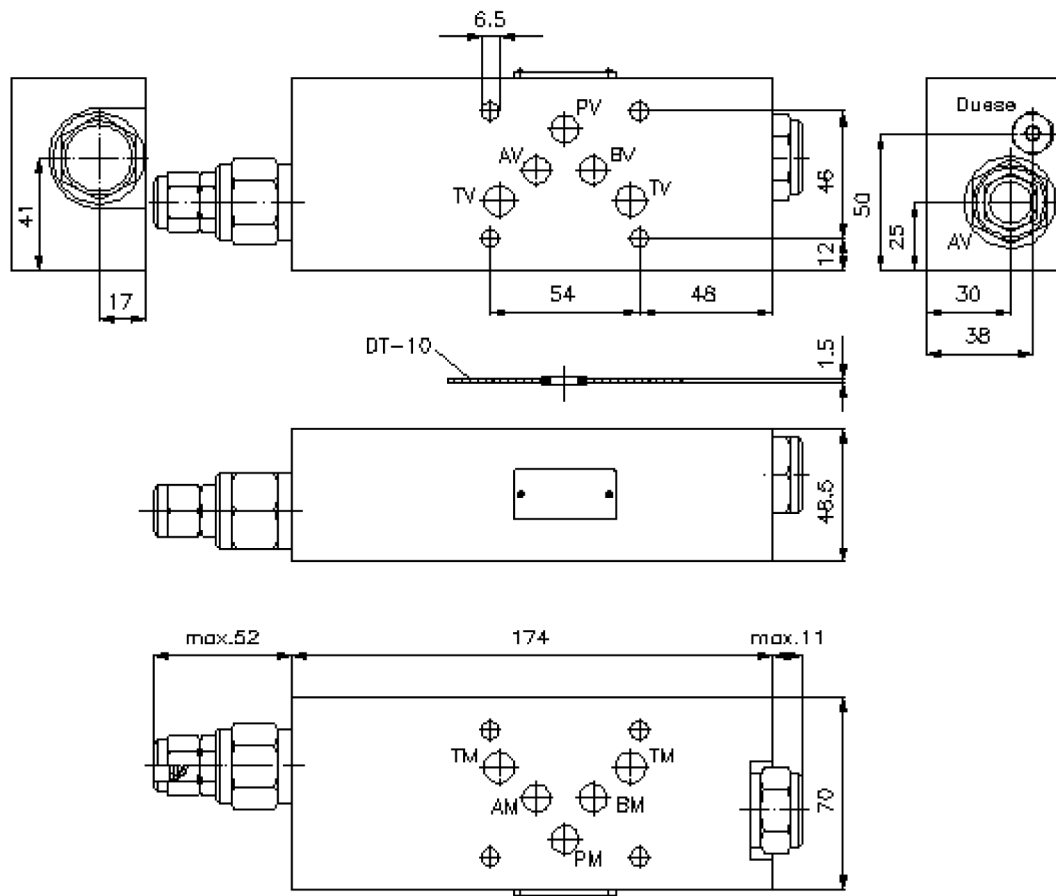
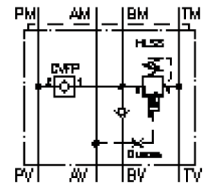


regeneration circuit plate CETOP 5 ((sandwich plate) in B)

DPSCZ-10.-B/..



regeneration circuit plate CETOP 5 ((sandwich plate) in B)

DPSCZ-10.-B/..



Motrac Hydraulik GmbH
Siemensring 87 - D-47877 Willich
fon +49-(0)2154-8162.0 - fax +49-(0)2154-8162.499
e-mail info.miw@motracindustries.com
internet www.motracindustries.com

IZ-250-470-00

(subject to change)



Ordering example:

DPSCZ - 10A - B / 12
| | | |
A **B** **C** **D**

Model code:

- | | |
|--|--|
| A design
regeneration plate
with mounting interface DIN 24340 form A
sandwichplate design | C function mode
B = in B acting |
| B size and material
10A = aluminum (F37)
10S = steel (9SMnPb28K resp. GGG-40) | D pressure range
hi-low sequence valve HLSV-10.-.. (AV)
15 = 20.7 - 103 bar
25 = 69.0 - 172 bar
25 = 138.0 - 276 bar |

Technical Data:

- note:** port "A" must be connected with the bottom side of the cylinder.
Setting of the sequence valve must be at least 10 - 20% below the system pressure.
e.g. system pressure = 60 bar; sequence valve = 50 bar = pressure setting 12
- nominal pressure:** 250 bar (A)
350 bar (S)
- nominal flow:** 100 l/min
- weight:** 1.4 / 4.6 kg (A/S)
- relief valve:** high low sequence valve HLSS-10.-.. see datasheet no. [CP-340-101-00](#)
- check valve:** check valve CVFP-10.-.. see datasheet no. [CC-110-101-00](#)
- included:** DT-10 = sealing plate with vulcanized O-ring (Viton FPM)