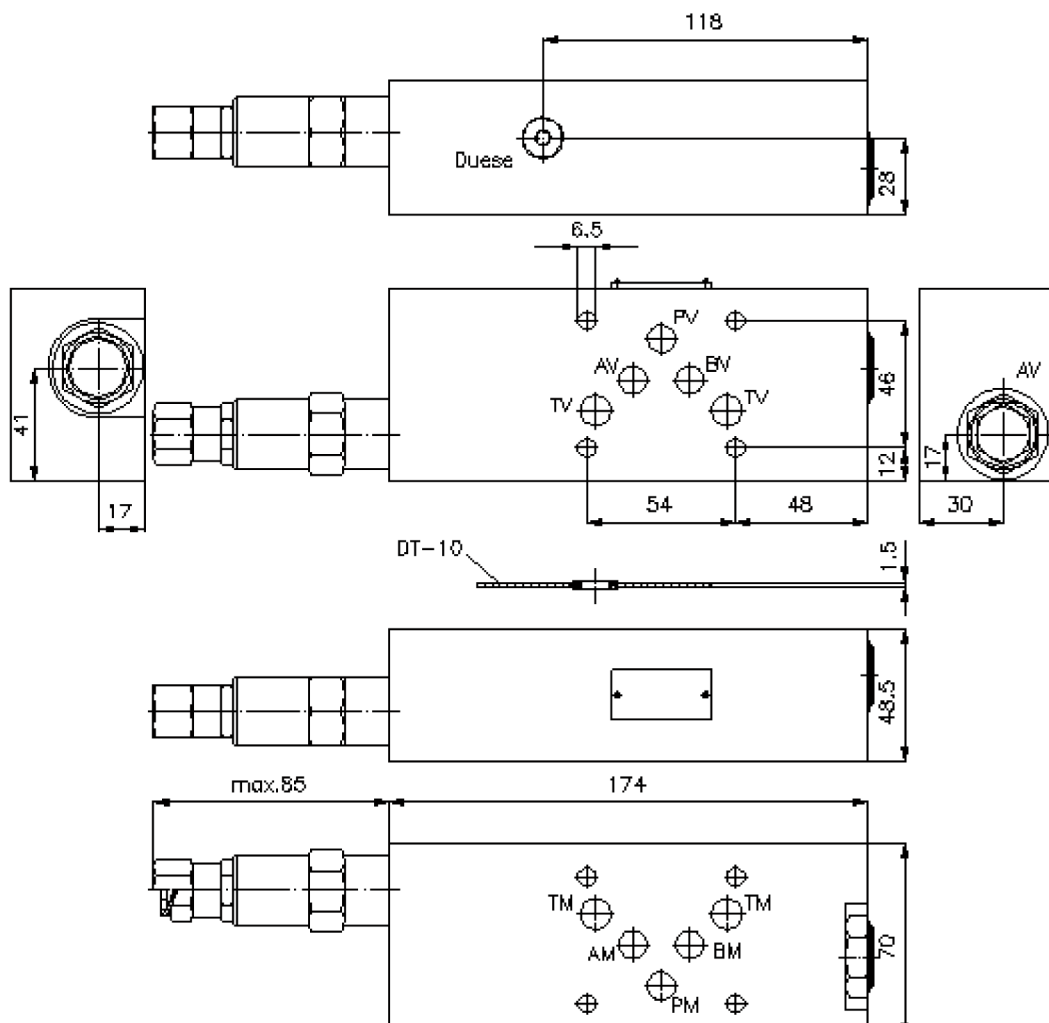
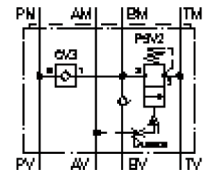


# regeneration circuit plate CETOP 5 ((sandwich plate) in B)

DPSMZ-10.-B/..

IZ-250-420-00

(subject to change)



# regeneration circuit plate CETOP 5 ((sandwich plate) in B)

DPSMZ-10.-B/..



Motrac Hydraulik GmbH  
Siemensring 87 - D-47877 Willich  
fon +49-(0)2154-8162.0 - fax +49-(0)2154-8162.499  
e-mail info.miw@motracindustries.com  
internet www.motracindustries.com

IZ-250-420-00

(subject to change)

## Ordering example:

DPSMZ - 10A - B / 12  
|        |        |        |  
**A**    **B**    **C**    **D**

## Model code:

- |  |  |
|--|--|
| <b>A</b> <b>design</b><br>regeneration plate<br>with mounting interface DIN 24340 form A<br>sandwichplate design | <b>D</b> <b>pressure range</b><br>sequence valve PSV2-10.-.. (AV)<br>02 = 3.5 - 14 bar<br>06 = 7.0 - 40 bar<br>12 = 14.0 - 80 bar<br>24 = 30.0 - 165 bar |
| <b>B</b> <b>size and material</b><br>10A = aluminum (F37)<br>10S = steel (9SMnPb28K resp. GGG-40)                |  |
| <b>C</b> <b>function mode</b><br>B = in B acting   |  |

## Technical Data:

### note:

port "A" must be connected with the bottom side of the cylinder.  
Setting of the sequence valve must be at least 5 - 10% below the system pressure.  
e.g. system pressure = 60 bar; sequence valve = 50 bar = pressure setting 12

### nominal pressure:

210 bar

### nominal flow:

23 l/min

### weight:

1.7 / 4.7 kg (A/S)

### relief valve:

pressure sequence valve PSV2-10.-.. see datasheet no. [MP-510-100-00](#)

### check valve:

check valve CV3-10.-.. see datasheet no. [MC-130-100-00](#)

### included:

DT-10 = sealing plate with vulcanized O-ring (Viton FPM)