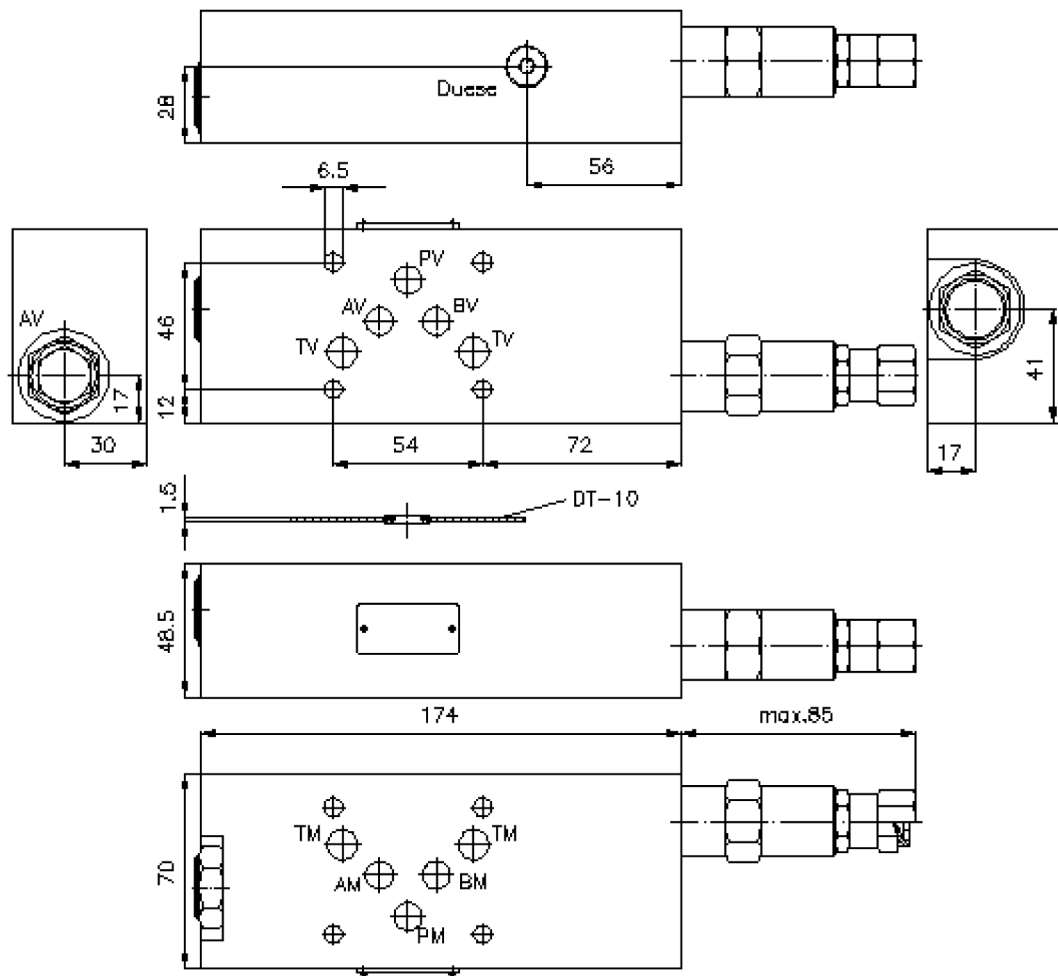
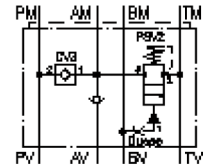


regeneration circuit plate CETOP 5 ((sandwich plate) in A)

DPSMZ-10.-A/..

IZ-250-400-00

(subject to change)



regeneration circuit plate CETOP 5 ((sandwich plate) in A)

DPSMZ-10.-A/..



Motrac Hydraulik GmbH
Siemensring 87 - D-47877 Willich
fon +49-(0)2154-8162.0 - fax +49-(0)2154-8162.499
e-mail info.miw@motracindustries.com
internet www.motracindustries.com

IZ-250-400-00

(subject to change)

Ordering example:

DPSMZ - 10A - A / 12
| | | |
A **B** **C** **D**

Model code:

- | | |
|--|--|
| A design
regeneration plate
with mounting interface DIN 24340 form A
sandwichplate design | D pressure range
sequence valve PSV2-10.-.. (AV)
02 = 3.5 - 14 bar
06 = 7.0 - 40 bar
12 = 14.0 - 80 bar
24 = 30.0 - 165 bar |
| B size and material
10A = aluminum (F37)
10S = steel (9SMnPb28K resp. GGG-40) | |
| C function mode
A = in A acting | |

Technical Data:

- | | |
|--------------------------|---|
| note: | port "B" must be connected with the bottom side of the cylinder.
Setting of the sequence valve must be at least 5 - 10% below the system pressure.
e.g. system pressure = 60 bar; sequence valve = 50 bar = pressure setting 12 |
| nominal pressure: | 210 bar |
| nominal flow: | 23 l/min |
| weight: | 1.7 / 4.7 kg (A/S) |
| relief valve: | pressure sequencce valve PSV2-10.-.. see datasheet no. <u>MP-510-100-00</u> |
| check valve: | check valve CV3-10.-.. see datasheet no. <u>MC-130-100-00</u> |
| included: | DT-10 = sealing plate with vulcanized O-ring (Viton FPM) |