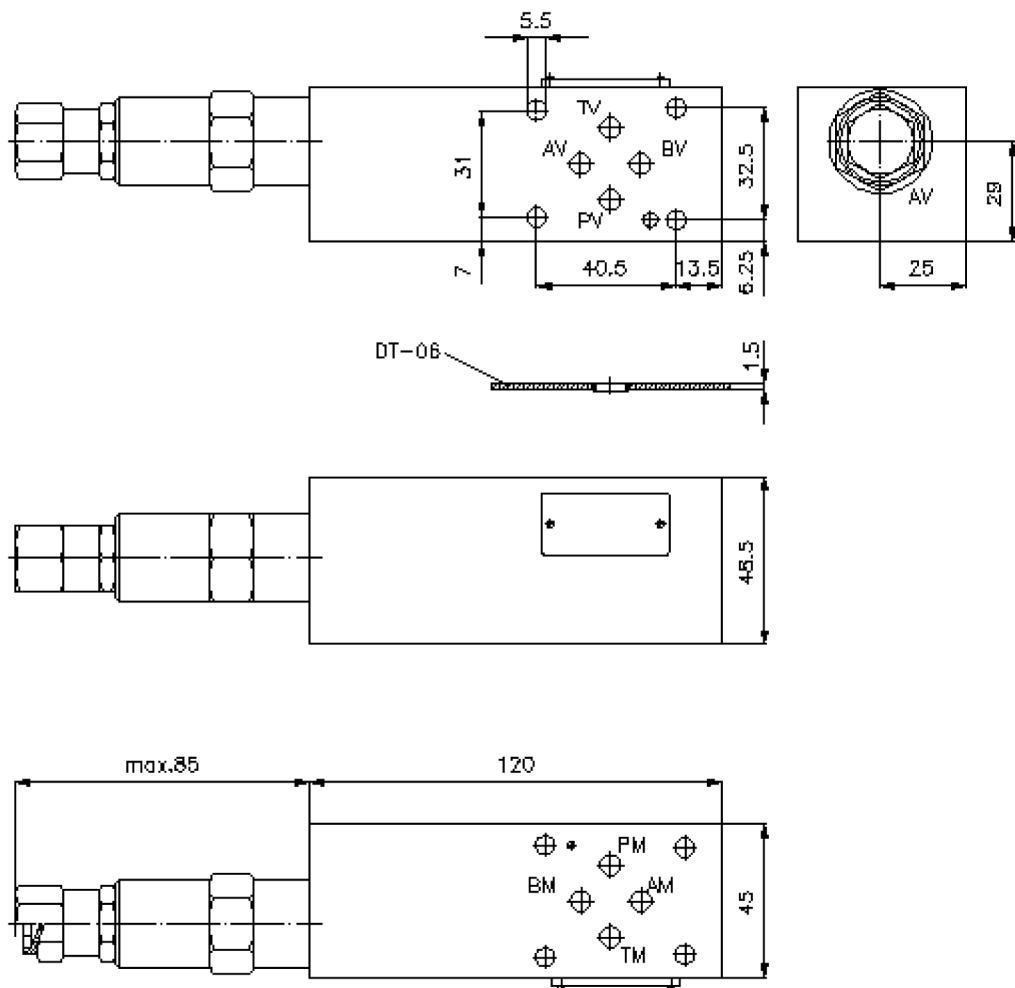
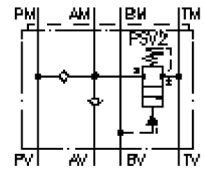


regeneration circuit plate CETOP 3 ((sandwich plate) in A)

DPSMZ-06.-A/..

IZ-250-200-00

(subject to change)



regeneration circuit plate CETOP 3 ((sandwich plate) in A)

DPSMZ-06.-A/..



Motrac Hydraulik GmbH
Siemensring 87 - D-47877 Willich
fon +49-(0)2154-8162.0 - fax +49-(0)2154-8162.499
e-mail info.miw@motracindustries.com
internet www.motracindustries.com

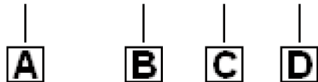
IZ-250-200-00

(subject to change)



Ordering example:

DPSMZ - 06A - A / 12



Model code:

- | | |
|--|--|
| <p>A design
regeneration plate
with mounting interface DIN 24340 form A
sandwichplate design</p> <p>B size and material
06A = aluminum (F37)
06S = steel (9SMnPb28K resp. GGG-40)</p> <p>C function mode
A = in A acting</p> | <p>D pressure range
sequence valve PSV2-10.-.. (AV)
02 = 3.5 - 14 bar
06 = 7.0 - 40 bar
12 = 14.0 - 80 bar
24 = 30.0 - 165 bar</p> |
|--|--|

Technical Data:

- | | |
|--------------------------|---|
| note: | port "B" must be connected with the bottom side of the cylinder.
Setting of the sequence valve must be at least 5 - 10% below the system pressure.
e.g. system pressure = 60 bar; sequence valve = 50 bar = pressure setting 12 |
| nominal pressure: | 210 bar |
| nominal flow: | 23 l/min |
| weight: | 0.8 / 2.1 kg (A/S) |
| screw in valve: | pressure sequencce valve PSV2-10.-.. see datasheet no. MP-510-100-00 |
| included: | DT-06 = sealing plate with vulcanized O-ring (Viton FPM) |