

# regeneration circuit plate CETOP 8 ((sandwich plate) in B with orifice)

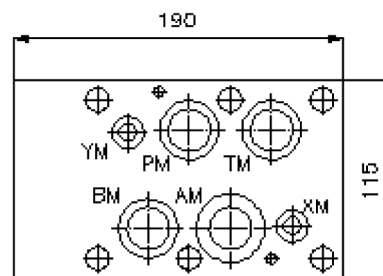
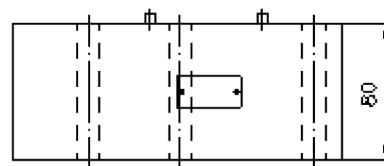
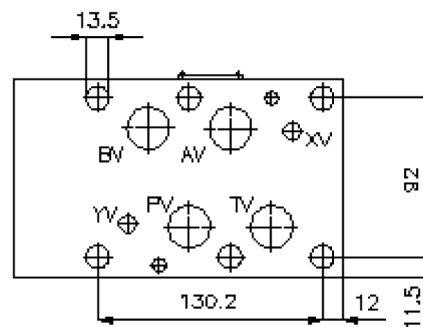
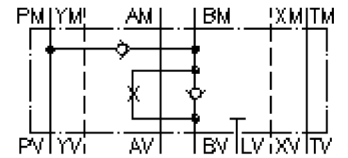
DSVZ-25S-BS/1.0mm



Motrac Hydraulik GmbH  
Siemensring 87 - D-47877 Willich  
fon +49-(0)2154-8162.0 - fax +49-(0)2154-8162.499  
e-mail info.miw@motracindustries.com  
internet www.motracindustries.com

IZ-210-603-00

(subject to change)



# regeneration circuit plate CETOP 8 (sandwich plate) in B with orifice

DSVZ-25S-BS/1.0mm



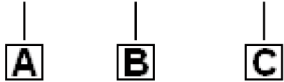
Motrac Hydraulik GmbH  
Siemensring 87 - D-47877 Willich  
fon +49-(0)2154-8162.0 - fax +49-(0)2154-8162.499  
e-mail info.miw@motracindustries.com  
internet www.motracindustries.com

IZ-210-603-00

(subject to change)

## Ordering example:

DSVZ - 25S - BS/1.0 MM



## Model code:

- |   |  |
|---|--|
| <p><b>A design</b><br/>regeneration plate<br/>with mounting interface DIN 24340 form A<br/>sandwichplate design</p> | <p><b>B size and material</b><br/>25S = steel (9SMnPb28K resp. GGG-40)</p> <p><b>C function mode</b><br/>BS/1.0mm = check valve with orifice 1.0<br/>mm in the "B" channel</p> |
|---|--|

## Technical Data:

<b>nominal pressure:</b>	350 bar
<b>nominal flow:</b>	240 l/min
<b>weight:</b>	12.3 kg
<b>crack pressure:</b>	0.2 - 0.3 bar
<b>free flow direction:</b>	see symbol
<b>included:</b>	3 pcs. O-ring 28.17 x 3.53 2 pcs. O-ring 14.00 x 2.62 2 pcs. O-ring 34.00 x 2.50