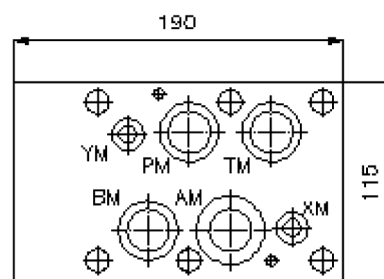
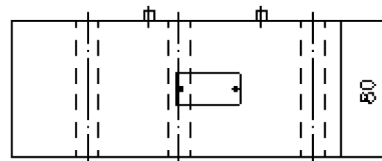
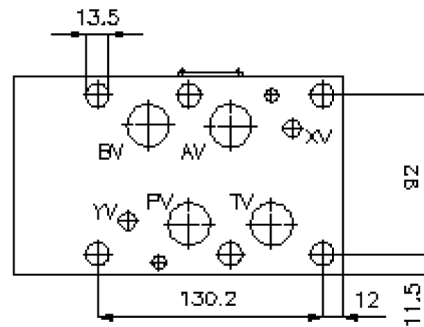
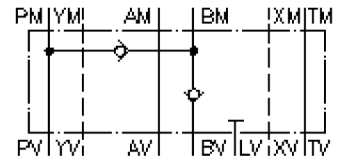


regeneration circuit plate CETOP 8 ((sandwich plate) in B)

DSVZ-25S-BS

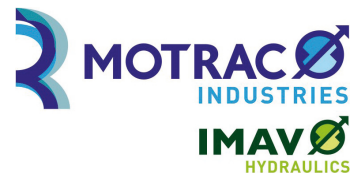
IZ-210-602-00

(subject to change)



regeneration circuit plate CETOP 8 ((sandwich plate) in B)

DSVZ-25S-BS



Motrac Hydraulik GmbH
Siemensring 87 - D-47877 Willich
fon +49-(0)2154-8162.0 - fax +49-(0)2154-8162.499
e-mail info.miw@motracindustries.com
internet www.motracindustries.com

IZ-210-602-00

(subject to change)

Ordering example:

DSVZ - 25S - BS
| | |
A **B** **C**

Model code:

- | | |
|--|---|
| A design regeneration plate with mounting interface DIN 24340 form A sandwichplate design | B size and material 25S = steel (9SMnPb28K resp. GGG-40) |
| | C function mode BS = check valve in the "B" channel |

Technical Data:

| | |
|-----------------------------|--|
| nominal pressure: | 350 bar |
| nominal flow: | 240 l/min |
| weight: | 12.3 kg |
| crack pressure: | 0.2 - 0.3 bar |
| free flow direction: | see symbol |
| included: | 3 pcs. O-ring 28.17 x 3.53 2 pcs. O-ring 14.00 x 2.62 2 pcs. O-ring 34.00 x 2.50 |