

regeneration circuit plate CETOP 8 ((sandwich plate) in A with orifice)

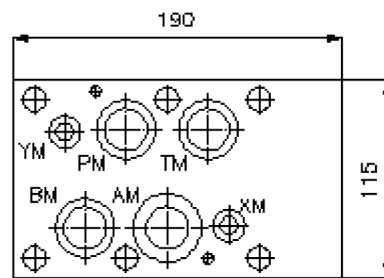
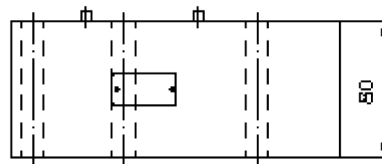
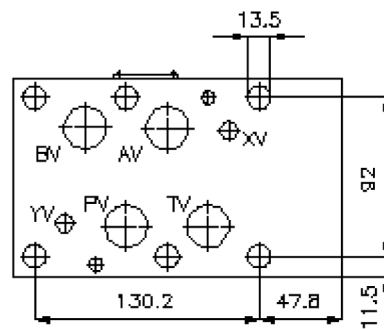
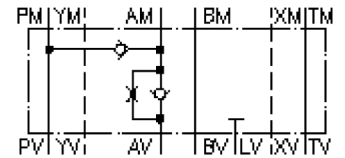
DSVZ-25S-AS/1.0mm



Motrac Hydraulik GmbH
Siemensring 87 - D-47877 Willich
fon +49-(0)2154-8162.0 - fax +49-(0)2154-8162.499
e-mail info.miw@motracindustries.com
internet www.motracindustries.com

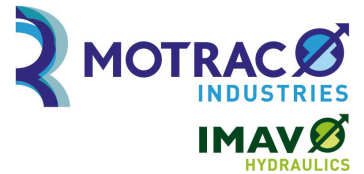
IZ-210-601-00

(subject to change)



regeneration circuit plate CETOP 8 (sandwich plate) in A with orifice)

DSVZ-25S-AS/1.0mm



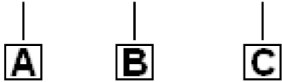
Motrac Hydraulik GmbH
Siemensring 87 - D-47877 Willich
fon +49-(0)2154-8162.0 - fax +49-(0)2154-8162.499
e-mail info.miw@motracindustries.com
internet www.motracindustries.com

IZ-210-601-00

(subject to change)

Ordering example:

DSVZ - 25S - AS/1.0 MM



Model code:

A **design**
regeneration plate
with mounting interface DIN 24340 form A
sandwichplate design

B **size and material**
25S = steel (9SMnPb28K resp. GGG-40)

C **function mode**
AS/1.0mm = check valve with orifice 1.0
mm in the "A" channel

Technical Data:

nominal pressure: 350 bar
nominal flow: 240 l/min
weight: 12.3 kg
crack pressure: 0.2 - 0.3 bar
free flow direction: see symbol
included: 3 pcs. O-ring 28.17 x 3.53
2 pcs. O-ring 14.00 x 2.62
2 pcs. O-ring 34.00 x 2.50