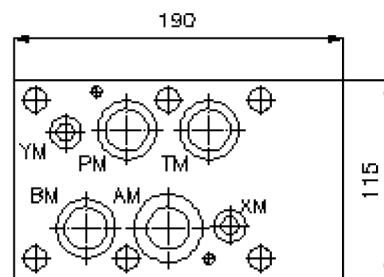
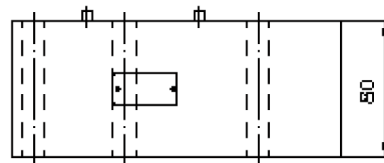
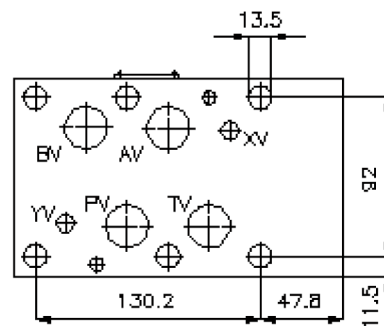
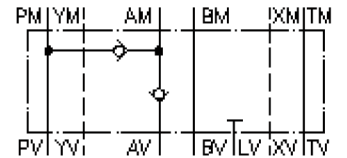


regeneration circuit plate CETOP 8 ((sandwich plate) in A)

DSVZ-25S-AS

IZ-210-600-00

(subject to change)



regeneration circuit plate CETOP 8 ((sandwich plate) in A)

DSVZ-25S-AS



Motrac Hydraulik GmbH
Siemensring 87 - D-47877 Willich
fon +49-(0)2154-8162.0 - fax +49-(0)2154-8162.499
e-mail info.miw@motracindustries.com
internet www.motracindustries.com

IZ-210-600-00

(subject to change)

Ordering example:

DSVZ - 25S - AS
| | |
A **B** **C**

Model code:

- | | |
|------------------------------------------------------------------------------------------------------------------|---------------------------------------------------------------------------|
| A design
regeneration plate
with mounting interface DIN 24340 form A
sandwichplate design | B size and material
25S = steel (9SMnPb28K resp. GGG-40) |
| | C function mode
AS = check valve in the "A" channel |

Technical Data:

nominal pressure:	350 bar
nominal flow:	240 l/min
weight:	12.3 kg
crack pressure:	0.2 - 0.3 bar
free flow direction:	see symbol
included:	3 pcs. O-ring 28.17 x 3.53 2 pcs. O-ring 14.00 x 2.62 2 pcs. O-ring 34.00 x 2.50