

# regeneration circuit plate CETOP 7 ((sandwich plate) in B with orifice)

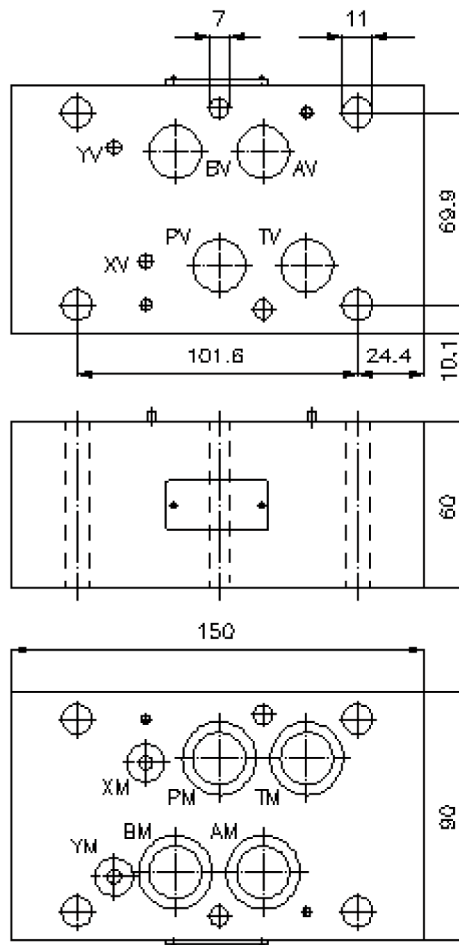
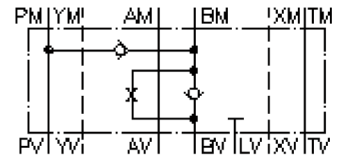
DSVZ-16S-BS/1.0mm



Motrac Hydraulik GmbH  
Siemensring 87 - D-47877 Willich  
fon +49-(0)2154-8162.0 - fax +49-(0)2154-8162.499  
e-mail info.miw@motracindustries.com  
internet www.motracindustries.com

IZ-210-503-00

(subject to change)



# regeneration circuit plate CETOP 7 (sandwich plate) in B with orifice)

DSVZ-16S-BS/1.0mm



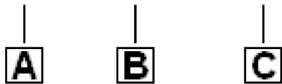
Motrac Hydraulik GmbH  
Siemensring 87 - D-47877 Willich  
fon +49-(0)2154-8162.0 - fax +49-(0)2154-8162.499  
e-mail info.miw@motracindustries.com  
internet www.motracindustries.com

IZ-210-503-00

(subject to change)

## Ordering example:

DSVZ - 16S - BS/1.0 MM



## Model code:

**A** **design**  
regeneration plate  
with mounting interface DIN 24340 form A  
sandwichplate design

**B** **size and material**  
16S = steel (9SMnPb28K resp. GGG-40)

**C** **function mode**  
BS/1.0mm = check valve with orifice 1.0  
mm in the "B" channel

## Technical Data:

<b>nominal pressure:</b>	350 bar
<b>nominal flow:</b>	140 l/min
<b>weight:</b>	5.7 kg
<b>crack pressure:</b>	0.2 - 0.3 bar
<b>free flow direction:</b>	see symbol
<b>included:</b>	3 pcs. O-Ring 22.22 x 2.62 3 pcs. O-Ring 9.19 x 2.62 2 pcs. O-Ring 25.00 x 2.50