

# regeneration circuit plate CETOP 7 ((sandwich plate) in A with orifice)

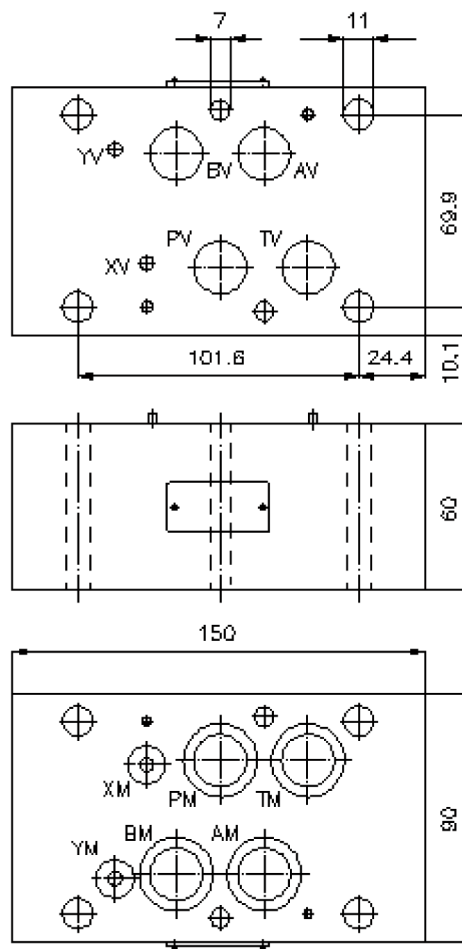
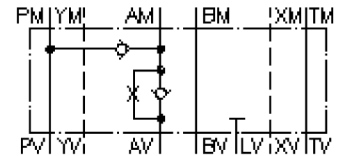
DSVZ-16S-AS/1.0mm



Motrac Hydraulik GmbH  
Siemensring 87 - D-47877 Willich  
fon +49-(0)2154-8162.0 - fax +49-(0)2154-8162.499  
e-mail info.miw@motracindustries.com  
internet www.motracindustries.com

IZ-210-501-00

(subject to change)



# regeneration circuit plate CETOP 7 ((sandwich plate) in A with orifice)

DSVZ-16S-AS/1.0mm



Motrac Hydraulik GmbH  
Siemensring 87 - D-47877 Willich  
fon +49-(0)2154-8162.0 - fax +49-(0)2154-8162.499  
e-mail info.miw@motracindustries.com  
internet www.motracindustries.com

IZ-210-501-00

(subject to change)

## Ordering example:

DSVZ - 16S - AS/1.0 MM



## Model code:

- |  |  |
|--|--|
| <p><b>A</b> <b>design</b><br/>regeneration plate<br/>with mounting interface DIN 24340 form A<br/>sandwichplate design</p> | <p><b>B</b> <b>size and material</b><br/>16S = steel (9SMnPb28K resp. GGG-40)</p> <p><b>C</b> <b>function mode</b><br/>AS/1.0mm = check valve with orifice 1.0<br/>mm in the "A" channel</p> |
|--|--|

## Technical Data:

<b>nominal pressure:</b>	350 bar
<b>nominal flow:</b>	140 l/min
<b>weight:</b>	5.7 kg
<b>crack pressure:</b>	0.2 - 0.3 bar
<b>free flow direction:</b>	see symbol
<b>included:</b>	3 pcs. O-Ring 22.22 x 2.62 3 pcs. O-Ring 9.19 x 2.62 2 pcs. O-Ring 25.00 x 2.50