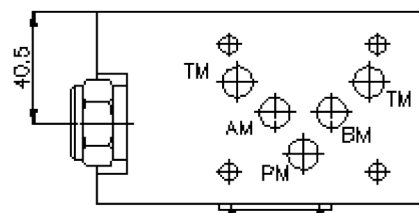
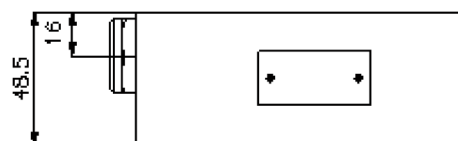
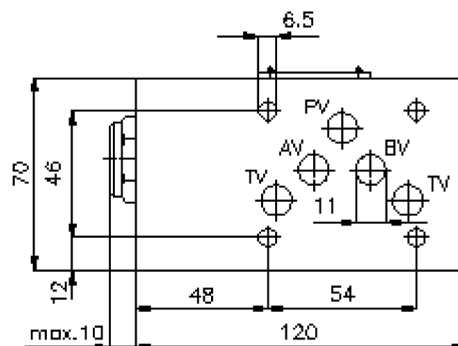
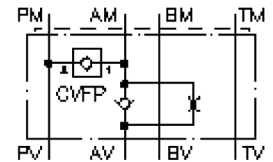


regeneration circuit plate CETOP 5 ((sandwich plate) in A with orifice)

DSCZ-10.-A/...mm

IZ-210-451-00

(subject to change)



regeneration circuit plate CETOP 5 ((sandwich plate) in A with orifice)

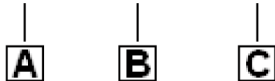
DSCZ-10.-A/...mm

IZ-210-451-00

(subject to change)

Ordering example:

DSCZ - 10A - A/1.0 MM



Model code:

- | | | |
|--|--|---|
| <p>A design
regeneration plate
with mounting interface DIN 24340 form A
sandwichplate design</p> | <p>B size and material
10A = aluminum (F37)
10S = steel (9SMnPb28K resp. GGG-40)</p> | <p>C function mode
A/1.0mm = check valve with orifice 1.0
mm in the "A" channel</p> |
|--|--|---|

Technical Data:

nominal pressure:	250 bar (A) 350 bar (S)
nominal flow:	68 l/min
weight:	1.1 / 2.9 kg (A/S)
crack pressure:	0.2 - 0.3 bar
free flow direction:	see symbol
check valve:	CVFP-10.-0-.. see datasheet no. CC-110-101-00
included:	DT-10 = sealing plate with vulcanized O-ring (Viton FPM)