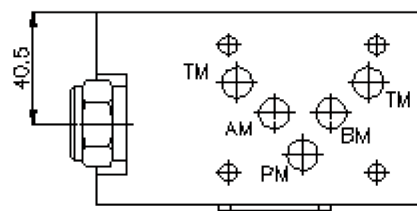
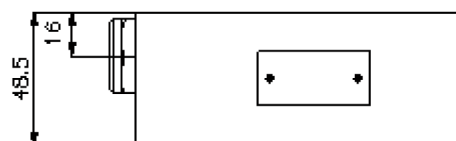
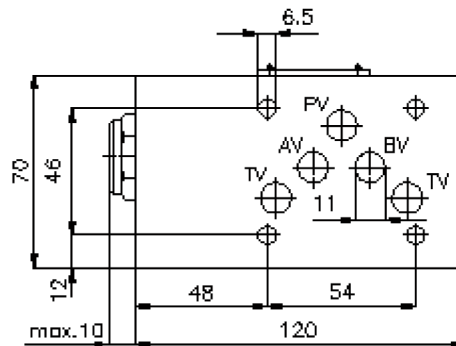
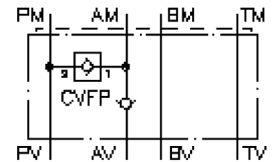


regeneration circuit plate CETOP 5 ((sandwich plate) in A)

DSCZ-10.-A

IZ-210-450-00

(subject to change)



regeneration circuit plate CETOP 5 ((sandwich plate) in A)

DSCZ-10.-A



Motrac Hydraulik GmbH
Siemensring 87 - D-47877 Willich
fon +49-(0)2154-8162.0 - fax +49-(0)2154-8162.499
e-mail info.miw@motracindustries.com
internet www.motracindustries.com

IZ-210-450-00

(subject to change)



Ordering example:

DSCZ - 10A - A
| | |
A **B** **C**

Model code:

A **design**
regeneration plate
with mounting interface DIN 24340 form A
sandwichplate design

B **size and material**
10A = aluminum (F37)
10S = steel (9SMnPb28K resp. GGG-40)

C **function mode**
A = check valve in the "A" channel

Technical Data:

nominal pressure: 250 bar (A)
350 bar (S)

nominal flow: 68 l/min

weight: 1.1 / 2.9 kg (A/S)

crack pressure: 0.2 - 0.3 bar

free flow direction: see symbol

check valve: CVFP-10.-0-... see datasheet no. [CC-110-101-00](#)

included: DT-10 = sealing plate with vulcanized O-ring (Viton FPM)