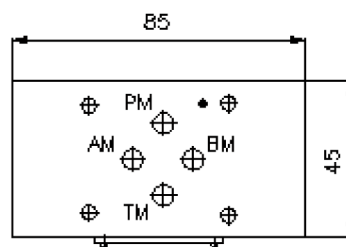
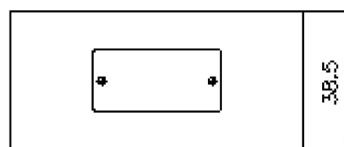
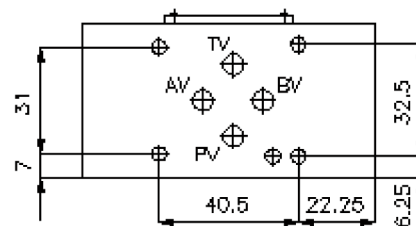
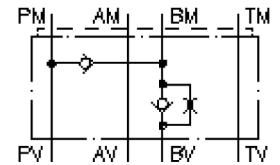


regeneration circuit plate CETOP 3 ((sandwich plate) in B with orifice) DSZ-06S-B/...mm

IZ-210-203-00

(subject to change)



regeneration circuit plate CETOP 3 ((sandwich plate) in B with orifice)

DSZ-06S-B/...mm



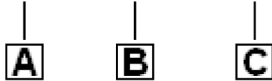
Motrac Hydraulik GmbH
Siemensring 87 - D-47877 Willich
fon +49-(0)2154-8162.0 - fax +49-(0)2154-8162.499
e-mail info.miw@motracindustries.com
internet www.motracindustries.com

IZ-210-203-00

(subject to change)

Ordering example:

DSZ - 06S - B/1.0 MM



Model code:

- | | |
|--|--|
| A design
regeneration plate
with mounting interface DIN 24340 form A
sandwichplate design | B size and material
06S = steel (9SMnPb28K resp. GGG-40) |
| | C function mode
B/1.0mm = check valve with orifice 1.0
mm in the "B" channel |

Technical Data:

nominal pressure:	350 bar
nominal flow:	30 l/min
weight:	1.1 kg
crack pressure:	0.2 - 0.3 bar
free flow direction:	see symbol
included:	DT-06 = sealing plate with vulcanized O-ring (Viton FPM)