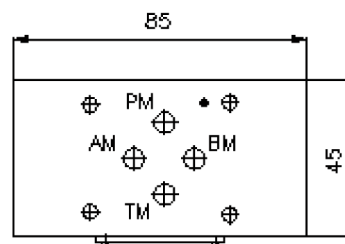
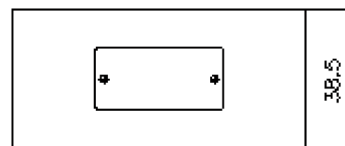
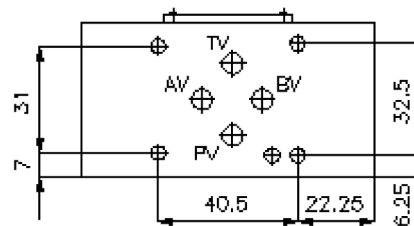
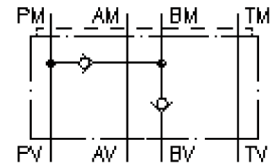


# regeneration circuit plate CETOP 3 ((sandwich plate) in B)

DSZ-06S-B

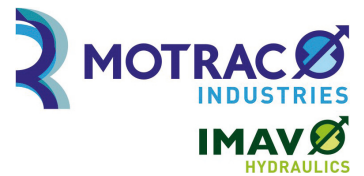
IZ-210-202-00

(subject to change)



# regeneration circuit plate CETOP 3 ((sandwich plate) in B)

DSZ-06S-B



Motrac Hydraulik GmbH  
Siemensring 87 - D-47877 Willich  
fon +49-(0)2154-8162.0 - fax +49-(0)2154-8162.499  
e-mail info.miw@motracindustries.com  
internet www.motracindustries.com

IZ-210-202-00

(subject to change)



## Ordering example:

DSZ - 06S - B  
|        |        |  
**A**    **B**    **C**

## Model code:

- |  |   |
|--|---|
| <b>A</b> <b>design</b><br>regeneration plate<br>with mounting interface DIN 24340 form A<br>sandwichplate design | <b>B</b> <b>size and material</b><br>06S = steel (9SMnPb28K resp. GGG-40) |
|  | <b>C</b> <b>function mode</b><br>B = check valve in the "B" channel       |

## Technical Data:

<b>nominal pressure:</b>	350 bar
<b>nominal flow:</b>	30 l/min
<b>weight:</b>	1.1 kg
<b>crack pressure:</b>	0.2 - 0.3 bar
<b>free flow direction:</b>	see symbol
<b>included:</b>	DT-06 = sealing plate with vulcanized O-ring (Viton FPM)