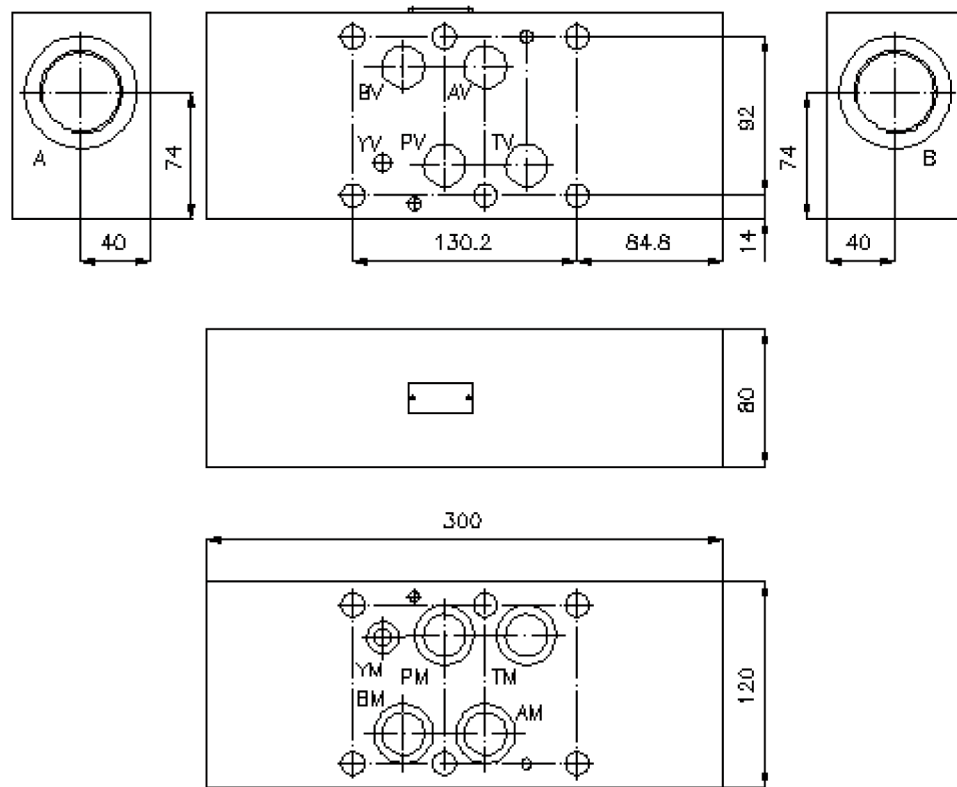
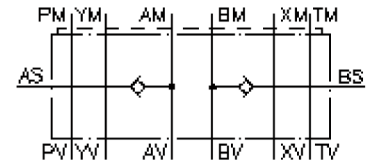


anti cavitation valve CETOP 8 ((sandwich plate) BSPP 1 1/2" external) NSZ-25A-A+B

IZ-190-600-00

(subject to change)



**anti cavitation valve CETOP 8
((sandwich plate) BSPP 1 1/2" external)
NSZ-25A-A+B**



Motrac Hydraulik GmbH
Siemensring 87 - D-47877 Willich
fon +49-(0)2154-8162.0 - fax +49-(0)2154-8162.499
e-mail info.miw@motracindustries.com
internet www.motracindustries.com

IZ-190-600-00

(subject to change)



Ordering example:

NSZ - 25A - A+B
| | |
A **B** **C**

Model code:

A **design**
anti cavitation valve
with mounting interface DIN 24340 form A
sandwichplate design

B **size and material**
25A = aluminum (F37)

C **function mode**
A+B = in A and B acting

Technical Data:

nominal pressure: 250 bar
nominal flow: 240 l/min
weight: 7.1 kg
crack pressure: 0.2 - 0.3 bar
in-line check valve: RKVC-32 see datasheet no. IC-210-000-00
seals: included:
4 pcs. O-ring 28.17 x 3.53
1 pcs. O-ring 14.00 x 2.65