

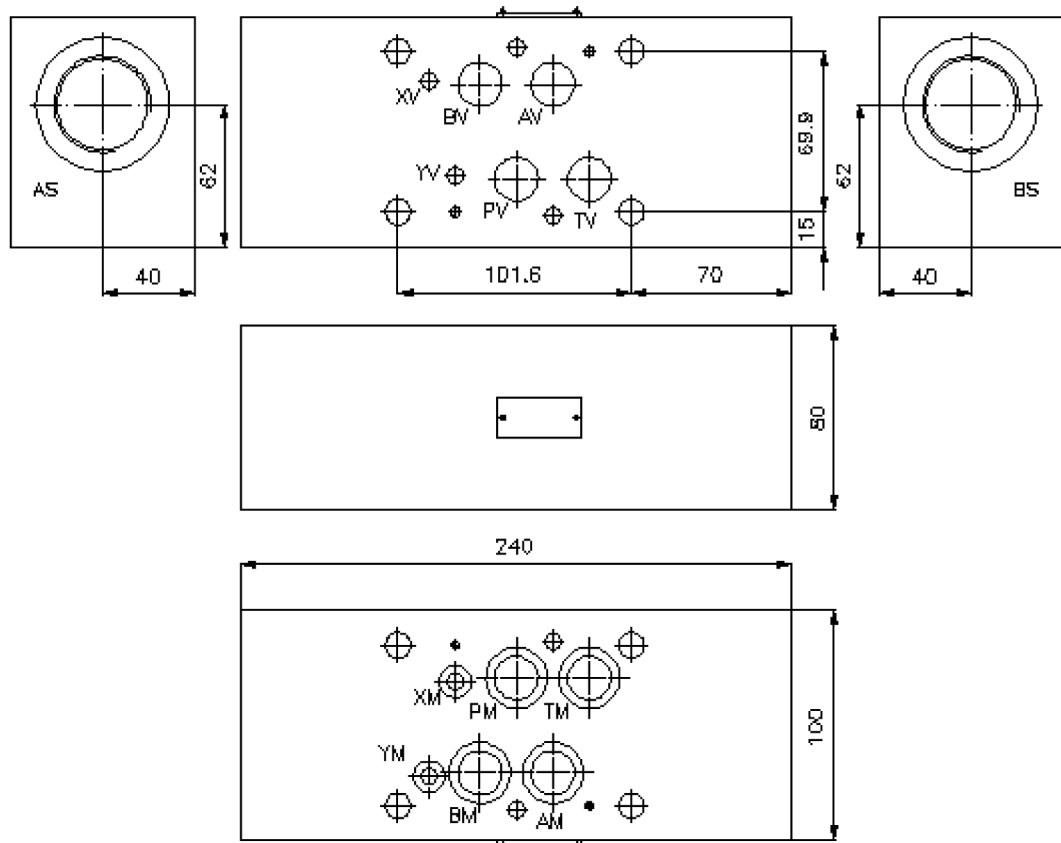
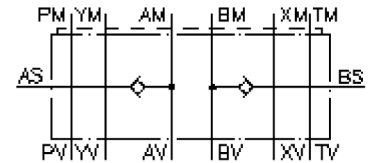
anti cavitation valve CETOP 7 ((sandwich plate) BSPP 1 1/4" external) NSZ-16A-A+B



Motrac Hydraulik GmbH
Siemensring 87 - D-47877 Willich
fon +49-(0)2154-8162.0 - fax +49-(0)2154-8162.499
e-mail info.miw@motracindustries.com
internet www.motracindustries.com

IZ-190-500-00

(subject to change)



anti cavitation valve CETOP 7
((sandwich plate) BSPP 1 1/4" external)
NSZ-16A-A+B



Motrac Hydraulik GmbH
Siemensring 87 - D-47877 Willich
fon +49-(0)2154-8162.0 - fax +49-(0)2154-8162.499
e-mail info.miw@motracindustries.com
internet www.motracindustries.com

IZ-190-500-00

(subject to change)



Ordering example:

NSZ - 16A - A+B
| | |
A **B** **C**

Model code:

A **design**
anti cavitation valve
with mounting interface DIN 24340 form A
sandwichplate design

B **size and material**
16A = aluminum (F37)

C **function mode**
A+B = in A and B acting

Technical Data:

nominal pressure: 250 bar
nominal flow: 140 l/min
weight: 4.6 kg
crack pressure: 0.2 - 0.3 bar
in-line check valve: RKVC-25 see datasheet no. IC-210-000-00
seals: included:
4 pcs. O-ring 22.22 x 2.62
2 pcs. O-ring 9.13 x 2.62