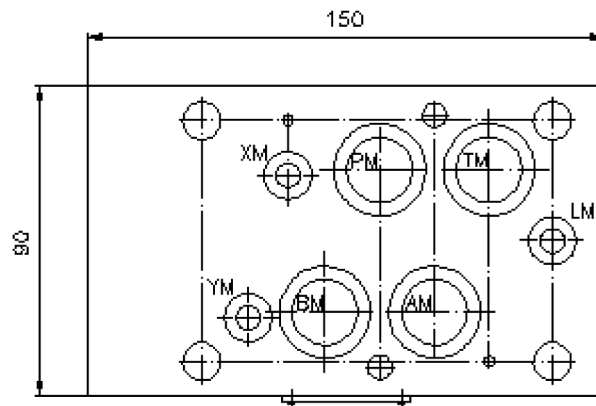
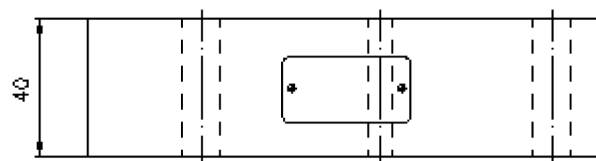
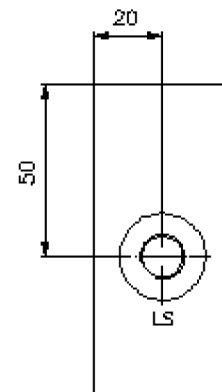
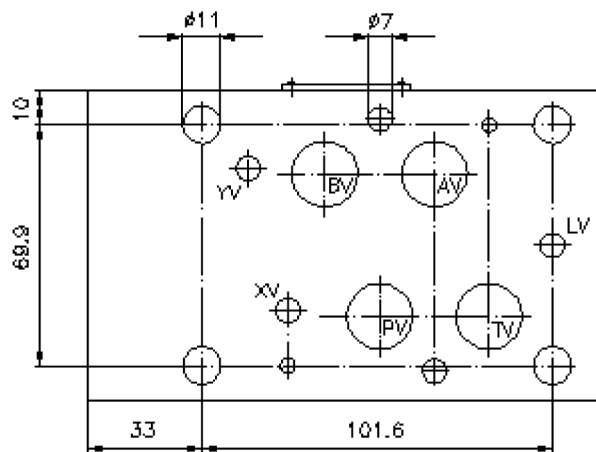
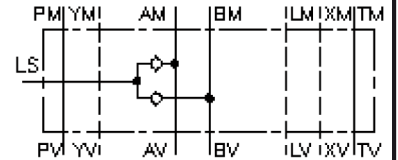


# shuttle valve CETOP 7 ((sandwich plate) from A+B extern to LS)

RLSVZ-16.-B02



# shuttle valve CETOP 7 ((sandwich plate) from A+B extern to LS)

RLSVZ-16.-B02



Motrac Hydraulik GmbH  
Siemensring 87 - D-47877 Willich  
fon +49-(0)2154-8162.0 - fax +49-(0)2154-8162.499  
e-mail info.miw@motracindustries.com  
internet www.motracindustries.com

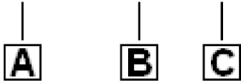
IZ-170-500-00

(subject to change)



## Ordering example:

RLSZ - 16A - B02



## Model code:

**A** **design**  
shuttle valve plate  
with mounting interface DIN 24340 form A  
for load-sensing  
sandwichplate design

**B** **size and material**  
16A = aluminum (F37)  
16S = steel (9SMnPb28K resp. GGG-40)

**C** **port size**  
B02 = BSPP 1/4"

## Technical Data:

**note:** through: P, T, A, B : 19 mm

**nominal pressure:** 250 bar (A)  
350 bar (S)

**weight:** 1.5 / 3.8 kg (A/S)

**shuttle valve:** RKVE-04 see datasheet no. IC-160-000-00

**included:** 4 pcs. O-ring 22.22 x 2.62  
3 pcs. O-ring 9.19 x 2.62