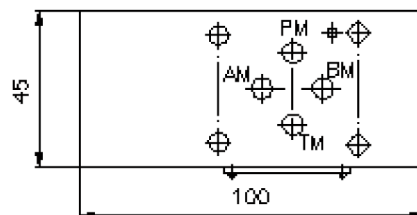
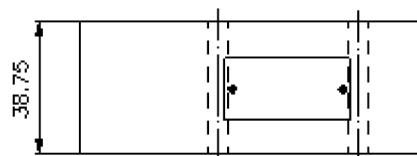
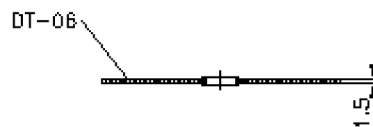
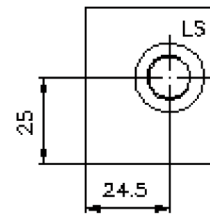
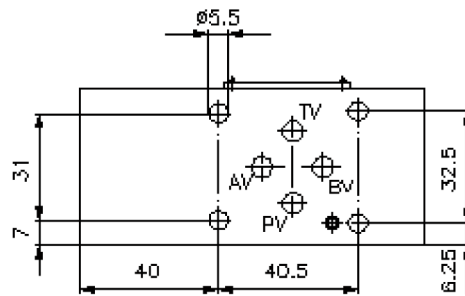
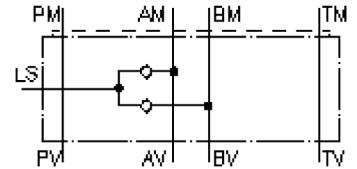


shuttle valve CETOP 3 ((sandwich plate) from A+B extern to LS)

RLSZ-06.-B02



shuttle valve CETOP 3 ((sandwich plate) from A+B extern to LS)

RLSZ-06.-B02



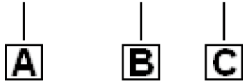
Motrac Hydraulik GmbH
Siemensring 87 - D-47877 Willich
fon +49-(0)2154-8162.0 - fax +49-(0)2154-8162.499
e-mail info.miw@motracindustries.com
internet www.motracindustries.com

IZ-170-200-00

(subject to change)

Ordering example:

RLSZ - 06A - B02



Model code:

A **design**
shuttle valve plate
with mounting interface DIN 24340 form A
for load-sensing
sandwichplate design

B **size and material**
06A = aluminum (F37)
06S = steel (9SMnPb28K resp. GGG-40)

C **port size**
B02 = BSPP 1/4"

Technical Data:

note:	through: P, T, A, B : 6 mm
nominal pressure:	250 bar (A) 350 bar (S)
weight:	0.5 / 1.4 kg (A/S)
shuttle valve:	RKVE-04 see datasheet no. IC-160-000-00
included:	DT-06 = sealing plate with vulcanized O-ring (Viton FPM)