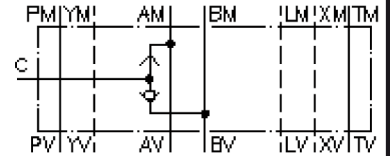


# shuttle valve CETOP 7 ((sandwich plate) external port X)

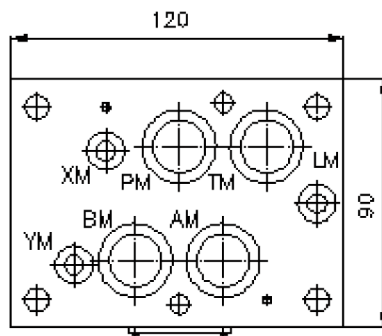
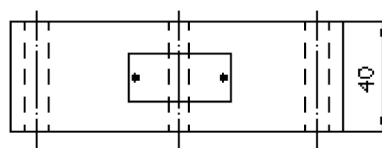
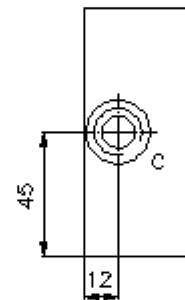
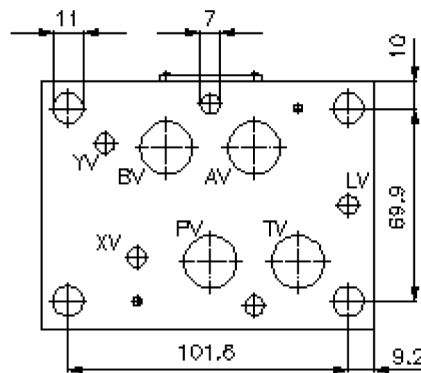
WRVZ-16.-CB

IZ-162-500-00

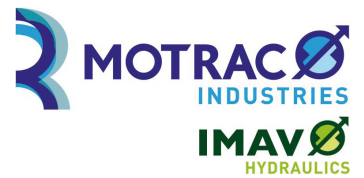
(subject to change)



port  
"C"  
BSPP 1/4"



# shuttle valve CETOP 7 ((sandwich plate) external port X) WRVZ-16.-CB



Motrac Hydraulik GmbH  
Siemensring 87 - D-47877 Willich  
fon +49-(0)2154-8162.0 - fax +49-(0)2154-8162.499  
e-mail info.miw@motracindustries.com  
internet www.motracindustries.com

IZ-162-500-00

(subject to change)



## Ordering example:

WRVZ - 16A - CB  
|        |        |  
**A**    **B**    **C**

## Model code:

- |   |   |  |
|---|---|--|
| <b>A</b> <b>design</b><br>shuttle valve<br>with mounting interface DIN 24340 form A<br>sandwichplate design | <b>B</b> <b>size and material</b><br>16A = aluminum (F37)<br>16S = steel (9SMnPb28K resp. GGG-40) | <b>C</b> <b>function mode</b><br>CB = shuttle-valve WRVCG-06 |
|---|---|--|

## Technical Data:

<b>nominal pressure:</b>	250 bar (A) 350 bar (S)
<b>weight:</b>	1. 1 / 2.6 kg (A/S)
<b>shuttle valve:</b>	WRVCG-04 see datasheet no. IC-310-000-00
<b>seals:</b>	included: 4 pcs. O-ring 22.22 x 2.62 3 pcs. O-ring 9.13 x 2.62